

OTX1 Antibody

ALTERNATE NAMES:	Homeobox protein OTX1; OTX1
CATALOG #:	3918-100
AMOUNT:	100 µg
HOST(ISOTYPE):	Rabbit (Ig)
IMMUNOGEN:	KLH conjugated synthetic peptide between 86-116 amino acids from the Central region of human OTX1.
SPECIES REACTIVITY:	Human

FORMULATION:

Supplied in PBS with 0.09% (W/V) sodium azide at a concentration of 0.25 mg/ml. This antibody is purified through a protein A column, followed by peptide affinity purification.

STORAGE CONDITIONS:

Maintain refrigerated at 2-8°C for up to 6 months or -20°C for long term storage.

BACKGROUND DESCRIPTION:

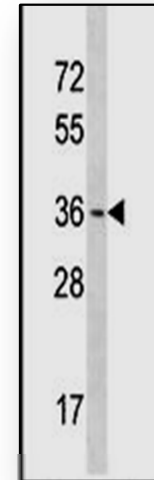
This gene encodes a member of the bicoid sub-family of homeodomain-containing transcription factors. The encoded protein acts as a transcription factor and may play a role in brain and sensory organ development. A similar protein in mice is required for proper brain and sensory organ development and can cause epilepsy.

SPECIFICITY:

The antibody detects OTX1 protein in T47D cell line lysates (MW ~ 37 kDa).

APPLICATIONS:

The antibody can be used for ELISA (1:1,000) and Western blotting (1: 100~500)



OTX1 Antibody (Center) (Cat. No. 3918-100). Western blot analysis in T47D cell line lysates (35 µg /lane)

FOR RESEARCH USE ONLY! Not to be used on humans.