

## PHOX2B Antibody

**ALTERNATE NAMES:** Paired mesoderm homeobox protein 2B, PHOX2B, PMX2B

**CATALOG #:** 3919-100

**AMOUNT:** 100 µg

**HOST(ISOTYPE):** Rabbit (Ig)

**IMMUNOGEN:** KLH conjugated synthetic peptide between 111-138 amino acids from the Central region of human PHOX2B.

**SPECIES REACTIVITY:** Mouse

**FORMULATION:**

Supplied in PBS with 0.09% (W/V) sodium azide at a concentration of 0.25 mg/ml. This antibody is purified through a protein A column, followed by peptide affinity purification.

**STORAGE CONDITIONS:**

Maintain refrigerated at 2-8°C for up to 6 months or -20°C for long term storage.

**BACKGROUND DESCRIPTION:**

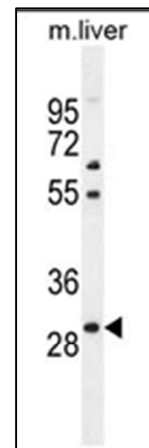
The DNA-associated protein encoded by this gene is a member of the paired family of homeobox proteins localized to the nucleus. The protein functions as a transcription factor involved in the development of several major noradrenergic neuron populations and the determination of neurotransmitter phenotype. The gene product is linked to enhancement of second messenger-mediated activation of the dopamine beta-hydroxylase, c-fos promoters and several enhancers, including cyclic amp-response element and serum-response element.

**SPECIFICITY:**

The antibody detects PHOX2B in mouse liver tissue lysates (~ 31 kDa).

**APPLICATIONS:**

The antibody can be used for ELISA (1:1,000) and Western blotting (1: 100~500)



PHOX2B Antibody (Center) (Cat. No. 3919-100) Western blot analysis in mouse liver tissue lysates (35 µg /lane).

**FOR RESEARCH USE ONLY! Not to be used on humans.**