

ICAM-2 Polyclonal Antibody

CATALOG NO:	3926-30T	30 µg (Trial size)
	3926-100	100 µg
HOST:	Rabbit	
IMMUNOGEN:	Synthetic peptide surrounding amino acid 257 of mouse ICAM-2 (Internal ID# BV-D37)	
SPECIES REACTIVITY:	Human, Mouse, Rat	

FORMULATION:

0.5mg/ml affinity purified rabbit polyclonal antibody in phosphate-buffered saline (PBS) containing 30% glycerol, 0.5% BSA and 0.01% thimerosal.

STORAGE CONDITIONS:

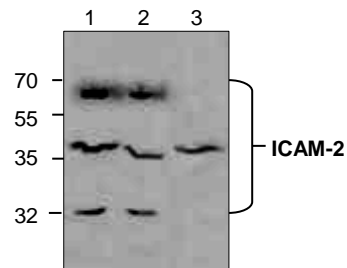
Store at -20°C. For long term storage, aliquot and freeze at -70°C. Avoid repeated freeze/thaw cycles.

BACKGROUND:

Cell adhesion molecules (CAMs) are a family of closely related cell surface glycoproteins involved in cell-cell interactions during growth and are thought to play an important role in embryogenesis and development. The family contains NCAM (for neuronal cell adhesion molecule), ICAM (for intercellular adhesion molecule), VCAM (vascular cell adhesion molecule), PECAM-1 (platelet/endothelial cell adhesion molecule-1), etc. ICAM-2 is involved in lymphocyte recirculation by blocking LFA-1-dependent cell adhesion.

APPLICATION:

The antibody can be used in Western blotting (0.5-4 µg/ml) and Immunohistochemistry (5 µg/ml). It detects multiple isoforms of ICAM-2. However, the optimal concentrations should be determined individually. Blocking peptide (Cat.# 3926BP-50) is available separately.



Cat. #: 3926-100
Western blot analysis of ICAM-2 in lysates from Jurkat cells (Lane 1 & 2) and 3T3 cells (Lane 3).

RELATED PRODUCTS:

- ICAM-1 Antibody (**Cat # 3422R-100**)
- ICAM-1 Blocking Peptide (**Cat # 3422RBP-50**)
- ICAM-1, Human Recombinant (**Cat # 7161-10, -50**)
- ICAM-2 Human Recombinant (**Cat # 7349-50**)
- ICAM-2 Blocking Peptide (**Cat # 3926BP-50**)
- ICAM-1 (human) ELISA Kit (**Cat # K7161-100**)
- ICAM-1 (mouse) ELISA Kit (**Cat # K7162-100**)
- ICAM-1 (rat) ELISA Kit (**Cat # K7163-100**)

FOR RESEARCH USE ONLY! Not to be used on humans.