

Anti-His-Tag Polyclonal Antibody

CATALOG NO.: 3998-30T 30 µg
3998-100 100 µg

HOST: Rabbit

IMMUNOGEN: 6xHis synthetic peptide

FORMULATION:

0.5 mg/ml affinity purified rabbit anti-His-Tag polyclonal antibody in phosphate buffered saline (PBS, pH 7.2), containing 30% glycerol, 0.5% BSA, 0.5 mM EDTA, and 0.03% Proclin.

SPECIES REACTIVITY:

It is expected that the His-Tag polyclonal antibody will react with proteins tagged with His from all species.

SPECIFICITY: The antibody detects His-tagged recombinant proteins.

BACKGROUND:

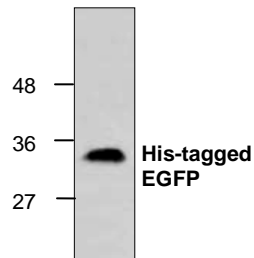
A variety of plasmids contain DNA that encodes an N-terminal tag consisting of six histidine (His) residues, followed by an extended multiple cloning site. The 6xHis tag on the expressed recombinant proteins allows for efficient coupling to Ni⁺⁺ affinity resins and purification by a single step chromatography. As is the case with other protein tags, this polyhistidine tag can be cleaved at sites recognized by enzymes such as thrombin and enterokinases to isolate the protein of interest.

APPLICATION AND USAGE:

The antibody can be used for Western blotting (1 µg/ml). However, the optimal conditions should be determined by the user.

STORAGE CONDITIONS:

Store at -20 °C. For long-term storage, aliquot and freeze at -70 °C. Avoid repeated freeze-thaw cycles.



Cat. No. 3998
Western blot analysis of His-Tag antibody using the His-tagged recombinant EGFP.

RELATED PRODUCTS:

- His-Tag Antibody (Clone 11E12) (Cat. No. 6714)
- His-Tag Antibody (Clone BV-G020) (Cat. No. 3646)
- Anti-His-Tag Rabbit Monoclonal Antibody (Cat. No. A1138)
- Anti-His-Tag Antibody (6E2) (Cat. No. A1032)
- DYKDDDDK Tag Antibody (Clone IE6) (Cat. No. 3022)
- Anti-DYKDDDDK-Tag Antibody (4A8) (Cat. No. A1030)

FOR RESEARCH USE ONLY! Not to be used on humans.