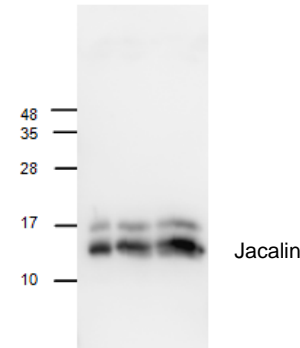


## Anti-Jacalin Antibody

|                               |   |
|-------------------------------|---|
| <b>CATALOG NO:</b>            | 5005-30T      30 µg (Trial size)<br>5005-100      100 µg  |
| <b>HOST:</b>                  | Rabbit  |
| <b>CLONE:</b>                 | Polyclonal  |
| <b>ISOTYPE:</b>               | IgG   |
| <b>IMMUNOGEN:</b>             | Artocarpus heterophyllus (Jackfruit) (ID# BV- L99)  |
| <b>PURIFICATION:</b>          | Affinity Purified   |
| <b>FORM:</b>                  | Liquid  |
| <b>FORMULATION:</b>           | 0.5 mg/ml antibody in PBS, pH 7.2, containing 30% glycerol, 0.5% BSA 0.5 mM EDTA and 0.03% proclin  |
| <b>STORAGE CONDITIONS:</b>    | Store at -20°C. For long-term storage, aliquot and freeze at -80°C. Avoid repeated freeze/defrost cycles.   |
| <b>BACKGROUND:</b>            | Jacalin is a plant based lectin, found in jackfruit. It has been studied for capturing O-glycoproteins such as mucins and IgA1, for potential applications in human immunology. Jacalin has a tetrameric two-chain structure with a weight of 66 kDa. with two non-covalently bound subunits at 14.6 and 17.1 kDa. Jacalin is preferably used in applications to isolate IgA from human serum, isolating human plasma glycoproteins and for applications in histochemistry. |
| <b>SPECIFICITY:</b>           | The antibody reacts with Jacalin. Purified Jacalin (Cat.# 6560-5) can be used as a positive control.  |
| <b>APPLICATION AND USAGE:</b> | The antibody can be used in Western Blot analysis (1-4 µg/ml). However, the optimal concentrations should be determined individually.   |

**FOR RESEARCH USE ONLY! Not to be used on humans.**



### Cat # 5005-100 Anti-Jacalin Antibody

Western blot analysis of Jacalin.

Lane 1: 70 ng

Lane 2: 140 ng

Lane 3: 210 ng

### RELATED PRODUCTS:

- Jacalin, human recombinant (Cat. No. 6560-5, -25, -100)
- Jacalin-Sepharose (Cat. No. 6561-5, -25, -100)