

## Anti-Human Amyloid Beta 1-17 Antibody (Clone C4D10)

<b>CATALOG #:</b>	5006-100
<b>AMOUNT:</b>	100 µg
<b>HOST:</b>	Mouse
<b>ISOTYPE:</b>	IgG1
<b>IMMUNOGEN:</b>	Synthetic peptide encoding amino acid residues 1-17 of Amyloid Beta protein.
<b>PURIFICATION:</b>	Protein A purified
<b>FORMULATION:</b>	100 µg (0.5 mg/ml) in 1X PBS, pH 7.4 with 50% Glycerol.
<b>SPECIES REACTIVITY:</b>	Human. The 1-13 amino acid sequence of this protein is conserved in mice, rat, humans and other species, so it might cross-interact with other species' samples.
<b>STORAGE CONDITIONS:</b>	Stable for 1 year from date of shipment when stored at -20 or -70°C. Stable for 1 month at 4°C. Avoid freeze/thaw cycles.

### DESCRIPTION:

Amyloid Beta (A $\beta$  or Abeta) is a multi-functional peptide of 36-43 amino acids, processed from the Amyloid Precursor Protein (APP). It is most commonly known to be associated with Alzheimer's disease since it is the main component of amyloid plaques found in the brains of the diseased subjects. However, it also plays a role in multiple non-disease activities including protection against metal-induced reactive oxidizing species (ROS), modification of cholesterol transport, and potential activity as a transcription factor. It is secreted by platelets into the blood serum and its levels elevate with age.

**APPLICATION:** Immunohistochemistry: 40 – 150 µg

**Note:** *This information is only intended as a guide. The optimal dilutions must be determined by the user*

**FOR RESEARCH USE ONLY! Not to be used on humans.**

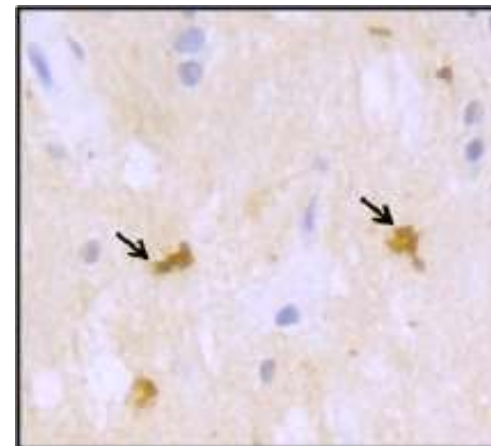


Figure 1: IHC Analysis of Alzheimer disease brain tissue, frontal lobe (BioChain, Cat # T2236051Alz) with 100 µg of antibody from clone C4D10 (after antigen retrieval with Tris-EDTA, pH 9.0 in pressure cooker). The antibody displays specific staining of extracellular plaques and neurofibrillary tangles formed by the Amyloid Beta plaque.

### RELATED PRODUCTS:

- Anti-Human Amyloid Beta 18-29 Antibody (Cat. No. 5007-100)
- ABAD/HADH2 Antibody (Cat. No. 3246-100)
- APP Antibody (Cat. No. 6001-100)
- ERAB/HCD2 Antibody (Cat. No. 3255-100)
- SAA1 monkey, recombinant (Cat. No. 4332-10, 1000)