

## CT-1 Antibody

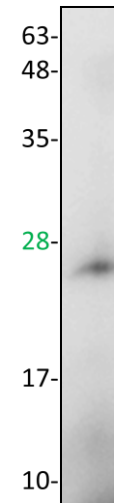
<b>CATALOG NO:</b>	5011-30T     30 µg (Trial size) 5011-100     100 µg
<b>ALTERNATE NAMES:</b>	Cardiotrophin-1
<b>HOST:</b>	Rabbit
<b>ISOTYPE:</b>	IgG
<b>IMMUNOGEN:</b>	Recombinant human CT-1 (BV-J36G)
<b>PURIFICATION:</b>	affinity purified rabbit IgG
<b>FORM:</b>	Liquid
<b>FORMULATION:</b>	0.5mg/ml of antibody in PBS, 0.01 % BSA, 0.01 % thimerosal, and 50 % glycerol, pH7.2
<b>SPECIES REACTIVITY:</b>	Human, Mouse and Rat.
<b>STORAGE CONDITIONS:</b>	Store for 1 year at -20°C from date of shipment. Avoid repeated freeze/thaw cycles.

**DESCRIPTION:**

Human Cardiotrophin-1 (CT-1) is a member of the leukemia inhibitory/ciliary neurotrophic factor/Oncostatin M/interleukin-6/interleukin-11 family of cytokines. Cardiotrophin-1 affects cells through interaction with the gp 130 receptor subunit. Recombinant human Cardiotrophin-1 is a 22.5 kDa protein containing 200 amino acid residues

**APPLICATION:** Western blot: 1:200

**Note:** This information is only intended as a guide. The optimal dilutions must be determined by the user.



**Western blot of recombinant human CT-1**

**RELATED PRODUCTS:**

- Human CT-1 (Cat. No. 4011-10,50,1000)

**FOR RESEARCH USE ONLY! Not to be used on humans.**