

ATG9B Antibody (CT)

ALTERNATE NAMES:	Autophagy-related protein 9B, APG9L2, APG9-like 2, Nitric oxide synthase 3-overlapping antisense gene protein, NOS3AS
CATALOG #:	5065-100
AMOUNT:	100 µg
HOST:	Rabbit
ISOTYPE:	IgG1
IMMUNOGEN:	ATG9B antibody was raised against a 17 amino acid peptide near the carboxy terminus of human ATG9B.
PURIFICATION:	Affinity chromatography purified via peptide column.
FORMULATION:	100 µg (1 mg/ml) in 1X PBS containing 0.02% sodium azide.
SPECIES REACTIVITY:	Human, mouse, rat
STORAGE CONDITIONS:	Can be stored at 4°C for three months. For long term storage, store at -20°C. Avoid freeze/thaw cycles.

DESCRIPTION:

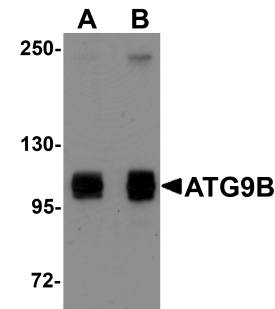
Autophagy, the process of bulk degradation of cellular proteins through an autophagosomic-lysosomal pathway is important for normal growth control and may be defective in tumor cells. It is involved in the preservation of cellular nutrients under starvation conditions as well as the normal turnover of cytosolic components. This process is negatively regulated by TOR (Target of rapamycin) through phosphorylation of autophagy protein APG1. ATG9B plays a role in autophagy and it's highly expressed in placenta and pituitary gland.

SPECIFICITY: This antibody will detect the CT of ATG9B.

APPLICATION: Western Blot: 1 - 2 µg/ml, Immunocytochemistry: 10 µg/ml, Immunofluorescence: 20 µg/ml. ELISA.

Note: This information is only intended as a guide. The optimal dilutions must be determined by the user.

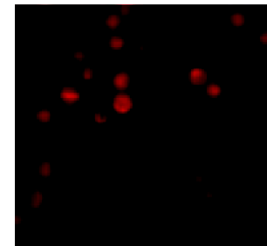
FOR RESEARCH USE ONLY! Not to be used on humans.



Western blot analysis of ATG9B in HeLa cell lysate with ATG9B antibody at (A) 1 and (B) 2 µg/mL.



Immunocytochemistry of ATG9B in HeLa cells with ATG9B antibody at 10 µg/mL.



Immunofluorescence of ATG9B in HeLa cells with ATG9B antibody at 20 µg/ml.

RELATED PRODUCTS:

- ATG3 Antibody (Center) (Cat. No. 5061-100)
- ATG5 Antibody (NT) (Cat. No. 5062-100)
- ATG5 Antibody (NT-R) (Cat. No. 5063-100)
- APG5/ATG5 Antibody (Cat. No. 3886-100)
- APG5/ATG5 Blocking Peptide (Cat. No. 3886BP-50)
- APG7/ATG7 Antibody (Cat. No. 3907-100)
- APG7/ATG7 Blocking Peptide (Cat. No. 3907BP-50)
- ATG9A Antibody (CT) (Cat. No. 5064-100)
- APG10/ATG10 Antibody (Cat. No. 3910-100)
- ATG101 Antibody (Cat. No. 5066-100)
- APG12/ATG12 Antibody (Cat. No. 3912-100)
- APG12/ATG12 Blocking Peptide (Cat. No. 3912BP-50)
- ATG12 Antibody (Center) (Cat. No. 5067-100)
- ATG12 Antibody (NT) (Cat. No. 5068-100)
- ATG13 Antibody (CT) (Cat. No. 5069-100)
- ATG16 Antibody (Center) (Cat. No. 5070-100)
- ATG16 Antibody (NT) (Cat. No. 5071-100)
- APG16/ATG16 Antibody (Cat. No. 3916-100)
- APG16/ATG16 Blocking Peptide (Cat. No. 3916BP-50)