

ATG16 Antibody (Center)

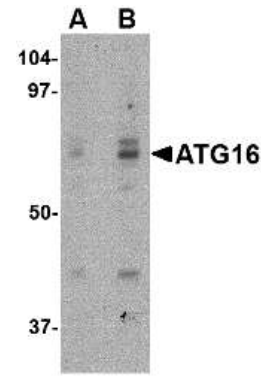
| | |
|----------------------------|---|
| ALTERNATE NAMES: | Autophagy protein 16, Autophagy related protein 16, ATG16L, APG16 |
| CATALOG #: | 5070-100 |
| AMOUNT: | 100 µg |
| HOST: | Rabbit |
| ISOTYPE: | IgG1 |
| IMMUNOGEN: | ATG16 antibody was raised against a 18 amino acid peptide from near the center of human ATG16. |
| PURIFICATION: | Affinity chromatography purified via peptide column. |
| FORMULATION: | 100 µg (1 mg/ml) in 1X PBS containing 0.02% sodium azide. |
| SPECIES REACTIVITY: | Human, mouse, rat |
| STORAGE CONDITIONS: | Can be stored at 4°C for three months. For long term storage, store at -20°C. Avoid freeze/thaw cycles. |

DESCRIPTION:

Autophagy, the process of bulk degradation of cellular proteins through an autophagosomic-lysosomal pathway is important for normal growth control and may be defective in tumor cells. It is involved in the preservation of cellular nutrients under starvation conditions as well as the normal turnover of cytosolic components. This process is negatively regulated by TOR (Target of rapamycin) through phosphorylation of autophagy protein APG1. ATG16, another member of the autophagy protein family, forms a complex with the ATG5-ATG12 conjugate. This multimeric protein has been shown to be essential for autophagosome formation in both yeast and mammals and targets the ATG5-ATG12 complex to the autophagic isolation membrane during the formation of the autophagosome. Because mammalian ATG16 has seven WD-repeats in its C-terminal domain, it has been suggested that these may form a platform for further protein-protein interactions. Multiple isoforms of ATG16 are known to exist.

| | |
|---------------------|--|
| SPECIFICITY: | This antibody will detect the Center of ATG16. |
| APPLICATION: | Western Blot: 0.25 – 0.5 µg/ml, Immunocytochemistry: 2 µg/ml, ELISA. |

Note: This information is only intended as a guide. The optimal dilutions must be determined by the user.



Western blot analysis of ATG16 in HeLa cell lysate with ATG16 antibody at (A) 0.25 and (B) 0.5 µg/ml.



Immunocytochemistry of ATG16 in HeLa cells with ATG16 antibody at 2 µg/ml.

RELATED PRODUCTS:

- ATG3 Antibody (Center) (Cat. No. 5061-100)
- ATG5 Antibody (NT) (Cat. No. 5062-100)
- ATG5 Antibody (NT-R) (Cat. No. 5063-100)
- APG5/ATG5 Antibody (Cat. No. 3886-100)
- APG5/ATG5 Blocking Peptide (Cat. No. 3886BP-50)
- APG7/ATG7 Antibody (Cat. No. 3907-100)
- APG7/ATG7 Blocking Peptide (Cat. No. 3907BP-50)
- ATG9A Antibody (CT) (Cat. No. 5064-100)
- ATG9B Antibody (CT) (Cat. No. 5065-100)
- APG10/ATG10 Antibody (Cat. No. 3910-100)
- ATG101 Antibody (Cat. No. 5066-100)
- APG12/ATG12 Antibody (Cat. No. 3912-100)
- APG12/ATG12 Blocking Peptide (Cat. No. 3912BP-50)
- ATG12 Antibody (Center) (Cat. No. 5067-100)
- ATG12 Antibody (NT) (Cat. No. 5068-100)
- ATG13 Antibody (CT) (Cat. No. 5069-100)
- ATG16 Antibody (NT) (Cat. No. 5071-100)
- APG16/ATG16 Antibody (Cat. No. 3916-100)
- APG16/ATG16 Blocking Peptide (Cat. No. 3916BP-50)