

# IL-17F Antibody

**ALTERNATE NAMES:** IL17A/F, IL17 A/F, IL-17A/F, IL-17 A/F, IL17AF, IL-17 AF, Interleukin-17 A/F, Interleukin-17 AF.

**CATALOG #:** 5109-50

**AMOUNT:** 50 µg

**HOST:** Rabbit

**IMMUNOGEN:** E.coli derived Recombinant Human IL-17F.

**PURIFICATION:** Affinity chromatography

**FORM:** Liquid

**FORMULATION:** A sterile filtered antibody solution in PBS, pH 7.2.

**SPECIES REACTIVITY:** Human

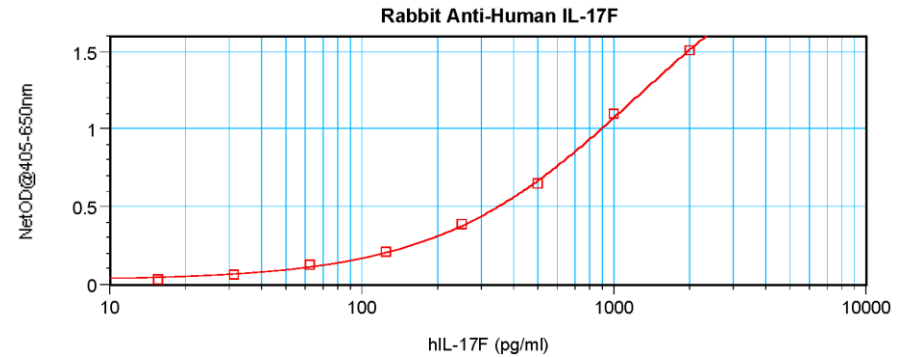
**STORAGE CONDITIONS:** -20°C.

**DESCRIPTION:** IL-17F, a member of the IL-17 family of structurally related cytokines, has been shown to stimulate proliferation and activation of T-cells and PBMCs. IL-17F also regulates cartilage matrix turnover and inhibits angiogenesis.

**APPLICATION:** WB, ELISA, Neutralization

- 1) **WB:** Use 0.1-0.2 µg/ml. The detection limit for recombinant human IL-17F is 1.5-3.0 ng/lane, under either reducing or non-reducing conditions.
- 2) **ELISA:** Use 0.5 - 2.0 µg/ml (100 µl/well antibody solution)
- 3) **Neutralization:** To yield one-half maximal inhibition [ND<sub>50</sub>] of the biological activity of hIL-17F (50.0 ng/ml), a concentration of 0.9-1.2 µg/ml of this antibody is required.

**Note:** This information is only intended as a guide. The optimal dilutions must be determined by the user.



To detect hIL-17F by sandwich ELISA (using 100 µl/well antibody solution) a concentration of 0.5 - 2.0 µg/ml of this antibody is required. This antibody allows the detection of at least 0.2 - 0.4 ng/well of recombinant hIL-17F.

**RELATED PRODUCTS:**

- IL-17B, human recombinant (Cat # 7106-10, -50)
- IL-17D, human recombinant (Cat # 7107-10, -50)
- Human Cell<sup>exp</sup> Human Recombinant IL-17A (Cat # 6468-10, -50)
- Human Cell<sup>exp</sup> Human Recombinant IL-17F (Cat # 6469-10, -50)
- IL-17, murine recombinant (Cat # 4177-10, -1000)
- IL-17A, human recombinant (Cat # 4176-25, -1000)
- IL-17A, rat recombinant (Cat # 4178-25, -1000)
- IL-17A/F, human recombinant (Cat # 4176AF-10, -50, -1000)
- IL-17E, human recombinant (Cat # 4176E-25, -1000)
- IL-17E, murine recombinant (Cat # 4177E-25, -100, -1000)
- IL-17E, rat recombinant (Cat # 4178E-25, -100, -1000)
- IL-17F, human recombinant (Cat # 4176F-25, -1000)
- IL-17F, murine recombinant (Cat # 4177F-25, -100, -1000)
- IL-17F, rat recombinant (Cat # 4178F-25, -100, -1000)
- IL-17 Antibody (Cat # 5176-200)

**FOR RESEARCH USE ONLY! Not to be used on humans.**

