

KC Polyclonal Antibody

CATALOG #:	5211-100
AMOUNT:	100 µg
LOT #:	_____
HOST:	Rabbit
IMMUNOGEN:	<i>E. coli</i> -expressed rat KC

FORMULATION:

100 µg (0.5 mg/ml) protein A purified rabbit anti-KC polyclonal antibody in phosphate buffered saline (PBS), pH 7.2, containing 50% glycerol, 1% BSA, 0.02% thimerosal.

SPECIES REACTIVITY: Mouse, rat

STORAGE CONDITIONS:

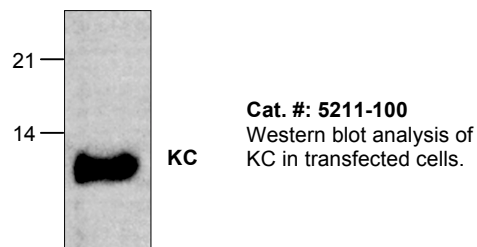
Store at -20°C. For long-term storage, aliquot and freeze at -70°C. Avoid repeated freeze/thaw cycles.

DESCRIPTION:

KC, a homolog of human and hamster gro/MGSA, is a 72-amino acid CXC chemokine originally cloned from rat macrophages and lung tissue. It is the mediator for recruitment and activation of neutrophils in rat lung inflammation models. Expression of KC can be upregulated by LPS and IL-1 β stimulation. IFN- γ blocks LPS-induced expression of KC.

APPLICATION AND SPECIFICITY:

The antibody can be used for Western blot analysis (0.5-4 µg/ml), immunoprecipitation (3-5 µg/ml), and in immunohistochemistry (5 µg/ml). However, the optimal conditions should be determined individually.



RELATED PRODUCTS:

Apoptosis Detection Kits & Reagents

- Annexin V Kits & Bulk Reagents
- Caspase Assay Kits & Reagents
- Mitochondrial Apoptosis Kits & Reagents
- Nuclear Apoptosis Kits & Reagents
- Apoptosis Inducers and Set
- Apoptosis siRNA Vectors

Cell Fractionation System

- Mitochondria/Cytosol Fractionation Kit
- Nuclear/Cytosol Fractionation Kit
- Membrane Protein Extraction Kit
- Cytosol/Particulate Rapid Separation Kit
- Mammalian Cell Extraction Kit
- FractionPREP Fractionation System

Cell Proliferation & Senescence

- Quick Cell Proliferation Assay Kit
- Senescence Detection Kit
- High Throughput Apoptosis/Cell Viability Assay Kits
- LDH-Cytotoxicity Assay Kit
- Bioluminescence Cytotoxicity Assay Kit
- Live/Dead Cell Staining Kit

Cell Damage & Repair

- HDAC Fluorometric & Colorimetric Assays & Drug Discovery Kits
- HAT Colorimetric Assay Kit & Reagents
- DNA Damage Quantification Kit
- Glutathione & Nitric Oxide Fluorometric & Colorimetric Assay Kits

Signal Transduction

- cAMP & cGMP Assay Kits
- Akt & JNK Activity Assay Kits
- Beta-Secretase Activity Assay Kit

Adipocyte & Lipid Transfer

- Recombinant Adiponectin, Survivin, & Leptin
- CETP Activity Assay & Drug Discovery Kits
- PLTP Activity Assay & Drug Discovery Kits
- Total Cholesterol Quantification Kit

Molecular Biology & Reporter Assays

- siRNA Vectors
- Cloning Insert Quick Screening Kit
- Mitochondrial & Genomic DNA Isolation Kits
- 5 Minutes DNA Ligation Kit
- 20 Minutes Gel Staining/Destaining Kit
- β -Galactosidase Staining Kit & Luciferase Reporter Assay Kit

Growth Factors and Cytokines

Monoclonal and Polyclonal Antibodies