

KC Polyclonal Antibody

CATALOG NO:	5212-30T 30 µg (Trial size)
	5212-100 100 µg
HOST:	Rabbit
IMMUNOGEN:	Synthetic peptide surrounding amino acid 78 of mouse KC (Internal ID# BV-D43G)
SPECIES REACTIVITY:	Human, mouse, rat

FORMULATION:

0.5mg/ml affinity purified rabbit polyclonal antibody in phosphate-buffered saline (PBS) containing 30% glycerol, 0.5% BSA, 5 mM EDTA and 0.03% proclin.

STORAGE CONDITIONS:

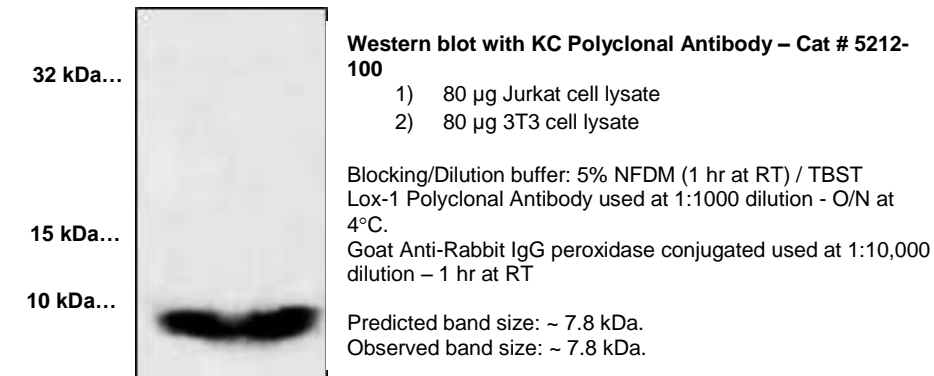
Store at -20°C. For long term storage, aliquot and freeze at -70°C. Avoid repeated freeze/defrost cycles.

BACKGROUND:

KC, a homolog of human and hamster gro/MGSA, is a 72-amino acid CXC chemokine originally cloned from rat macrophages and lung tissue. It is the mediator for recruitment and activation of neutrophils in rat lung inflammation models. Expression of KC can be upregulated by LPS and IL-1-gamma stimulation. IFN-γ blocks LPS-induced expression of KC.

APPLICATION:

The antibody can be used in Western blotting (0.5-4 µg/ml) and Immunohistochemistry (5 µg/ml). However, the optimal concentrations should be determined individually. Blocking peptide (Cat.# 5212BP-50) is available separately.



RELATED PRODUCTS:

- GRO-alpha/KC, murine recombinant (**Cat # 4210-1000, -20**)
- GRO-alpha/MGSA, human recombinant (**Cat # 4104-1000, -25**)
- GRO-beta Antibody (**Cat # 5106-100**)
- GRO-beta, human recombinant (**Cat # 4106-10, -1000**)
- GRO-beta/MIP-2, rat recombinant (**Cat # 4108-20, -1000**)
- GRO-gamma Antibody (**Cat # 5107-100**)
- GRO-gamma, human recombinant (**Cat # 4107-10, -1000**)
- GRO/KC, murine recombinant (**Cat # 4210-100**)
- GRO/MGSA Antibody (**Cat # 5104-100**)