

## CRIM1 Antibody (CT)

<b>ALTERNATE NAMES:</b>	Cysteine rich transmembrane BMP regulator 1 (chordin-like), CRIM-1, Cysteine-rich motor neuron 1 protein, Cysteine-rich repeat-containing protein S52
<b>CATALOG #:</b>	5287-100
<b>AMOUNT:</b>	100 µg
<b>HOST:</b>	Rabbit
<b>ISOTYPE:</b>	IgG1
<b>IMMUNOGEN:</b>	CRIM1 antibody was raised against a 17 amino acid peptide near the carboxy terminus of human Crim1.
<b>PURIFICATION:</b>	Affinity chromatography purified via peptide column
<b>FORMULATION:</b>	100 µg (1 mg/ml) in 1X PBS containing 0.02 % sodium azide.
<b>SPECIES REACTIVITY:</b>	Human
<b>STORAGE CONDITIONS:</b>	Can be stored at 4°C for three months. For long term storage, store at -20°C. Avoid freeze/thaw cycles.

### DESCRIPTION:

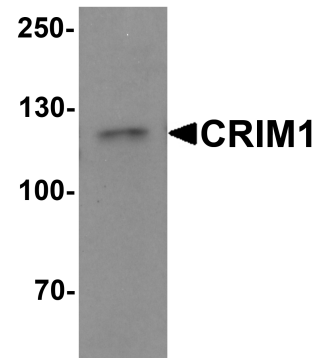
CRIM1 (cysteine-rich motor neuron 1), a glycosylated type I transmembrane protein, plays a role in tissue development i.e. capillary formation and maintenance during angiogenesis. It contains an N-terminal IGF-binding protein-like motif and six von Willebrand-like cysteine-rich repeats (CRRs) in its extracellular domain. CRIM1 interacts with BMP4 and BMP7 via the CRRs and functions as an antagonist. CRIM1 is developmentally expressed in a number of tissues including the pancreas, kidney, placenta, brain and blood vessels. CRIM1 may participate in CNS and placental development by interacting with growth factors involved in motor neuron differentiation and survival.

**SPECIFICITY:** CRIM1 antibody is human reactive. CRIM1 antibody is predicted to not cross-react with CRIM2.

**APPLICATION:** Western Blot: 1 - 2 µg/ml, ELISA

**Note:** *This information is only intended as a guide. The optimal dilutions must be determined by the user*

**FOR RESEARCH USE ONLY! Not to be used on humans.**



### RELATED PRODUCTS:

- BMP4 Antibody (Cat. No. 5674A-100)
- BMP4 Antibody (Cat. No. 5674R-100)
- BMP7 Antibody (Cat. No. 5677R-100)
- CRIM2 Antibody (Cat. No. 5288-100)