

LMX1B Antibody (CT)

ALTERNATE NAMES: LIM homeobox transcription factor 1 beta, LIM/homeobox protein LMX1B, LIM/homeobox protein 1.2

CATALOG #: 5302-100

AMOUNT: 100 µg

HOST: Rabbit

ISOTYPE: IgG1

IMMUNOGEN: Rabbit polyclonal LMX1B antibody was raised against a 17 amino acid peptide near the carboxy terminus of human LMX1B.

PURIFICATION: Affinity chromatography purified via peptide column

FORMULATION: 100 µg (1 mg/ml) in 1X PBS containing 0.02 % sodium azide.

SPECIES REACTIVITY: Human, Mouse, Rat

STORAGE CONDITIONS: Can be stored at 4°C for three months. For long term storage, store at -20°C. Avoid freeze/thaw cycles.

DESCRIPTION:

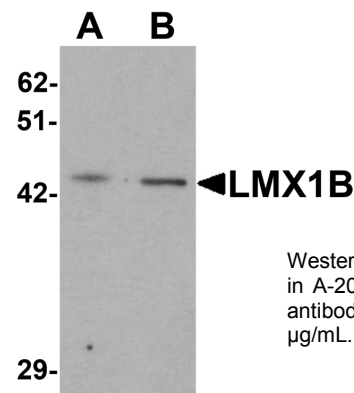
The LIM homeobox transcription factor 1B (LMX1B) belongs to the LIM-homeodomain family. Members of this family are known to be important for pattern formation during development. LMX1B regulates mid-hindbrain patterning; LMX1B-null mice embryos have a severe reduction in the number of midbrain dopaminergic neurons compared to wild-type. While LMX1B appears to be important for both the development and the survival of dopamine neurons, the related LMX1A is crucial for the differentiation of these cells. However, LMX1A and LMX1B function cooperatively to regulated the proliferation, specification and differentiation of midbrain dopaminergic neuronal progenitors

SPECIFICITY: At least three isoforms are known to exist. This antibody is predicted to not cross-react with LMX1A.

APPLICATION: Western Blot: 1 - 2 µg/ml, ELISA

Note: *This information is only intended as a guide. The optimal dilutions must be determined by the user*

FOR RESEARCH USE ONLY! Not to be used on humans.



RELATED PRODUCTS:

- LMX1A Antibody (CT) (Cat # 5301-100)
- LIMK1 Antibody (Cat # 3433-100)
- LIMK2 Antibody (Cat # 3584-100)