

## TGF- $\beta$ 3 Polyclonal Antibody

<b>CATALOG NO:</b>	5344R-30T      30 $\mu$ g (Trial size) 5344R-100      100 $\mu$ g
<b>HOST:</b>	Rabbit
<b>IMMUNOGEN:</b>	Synthetic peptide surrounding amino acid 254 of human TGF- $\beta$ 3 (Internal ID# BV-D80G)
<b>FORMULATION:</b>	100 $\mu$ g (0.5 mg/ml) peptide affinity purified rabbit polyclonal antibody in phosphate-buffered saline (PBS) containing 30% glycerol, 0.5% BSA, and 0.01% thimerosal.
<b>SPECIES REACTIVITY:</b>	Human, mouse, rat
<b>STORAGE CONDITIONS:</b>	Store at -20°C. For long term storage, aliquot and freeze at -70°C. Avoid repeated freeze/thaw cycles.

### BACKGROUND:

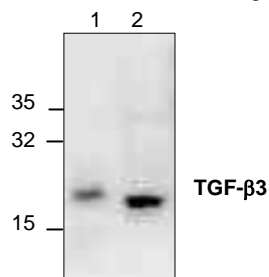
The three mammalian isoforms of TGF-beta (TGF-beta1, TGF-beta2, TGF-beta3) signal through the same receptor and elicit similar biological responses. They are multifunctional cytokines that regulate cell proliferation, growth, differentiation and motility as well as synthesis and deposition of the extracellular matrix. They are involved in various physiological processes including embryogenesis, tissue remodeling and wound healing. They are secreted predominantly as latent complexes which are stored at the cell surface and in the extracellular matrix. The release of biologically active TGF-beta isoform from a latent complex involves proteolytic processing of the complex and/or induction of conformational changes by proteins such as thrombospondin-1. TGF-beta2 has been shown to exert suppressive effects on IL-2 dependent T-cell growth, and may also have an autocrine function in enhancing tumor growth by suppressing immuno-surveillance of tumor development.

### SPECIFICITY:

The antibody recognizes ~25 kDa TGF- $\beta$ 3 from samples of human, mouse, and rat origins. Reactivity to other species has not been tested.

### APPLICATION:

The antibody can be used in Western blotting (0.5-4  $\mu$ g/ml). However, the optimal concentrations should be determined individually. Blocking peptide (Cat.#: 5344RBP-50) is available separately.



**Cat. # : 5344R-100**

Western blot analysis of TGF- $\beta$ 3 in rat kidney tissue lysate (Lane 1) and Mouse 3T3 cell lysate (Lane 2).

### RELATED PRODUCTS:

#### Apoptosis Detection Kits & Reagents

- Annexin V Kits & Bulk Reagents
- Caspase Assay Kits & Reagents
- Mitochondrial Apoptosis Kits & Reagents
- Nuclear Apoptosis Kits & Reagents
- Apoptosis Inducers and Set
- Apoptosis siRNA Vectors

#### Cell Fractionation System

- Mitochondria/Cytosol Fractionation Kit
- Nuclear/Cytosol Fractionation Kit
- Membrane Protein Extraction Kit
- Cytosol/Particulate Rapid Separation Kit
- Mammalian Cell Extraction Kit
- FractionPREP Fractionation System

#### Cell Proliferation & Senescence

- Quick Cell Proliferation Assay Kit
- Senescence Detection Kit
- High Throughput Apoptosis/Cell Viability Assay Kits
- LDH-Cytotoxicity Assay Kit
- Bioluminescence Cytotoxicity Assay Kit
- Live/Dead Cell Staining Kit

#### Cell Damage & Repair

- HDAC Fluorometric & Colorimetric Assays & Drug Discovery Kits
- HAT Colorimetric Assay Kit & Reagents
- DNA Damage Quantification Kit
- Glutathione Fluorometric & Colorimetric Assay Kits
- Nitric Oxide Fluorometric & Colorimetric Assay Kits

#### Signal Transduction

- Camp & cGMP Assay Kits
- Akt & JNK Activity Assay Kits
- Beta-Secretase Activity Assay Kit

#### Adipocyte & Lipid Transfer

- Recombinant Adiponectin, Survivin, & Leptin
- CETP & PLTP Activity Assay & Drug Discovery Kits
- Total Cholesterol Quantification Kit

#### Molecular Biology & Reporter Assays

- siRNA Vectors
- Cloning Insert Quick Screening Kit
- Mitochondrial & Genomic DNA Isolation Kits
- 5 Minutes DNA Ligation Kit
- 20 Minutes Gel Staining/Destaining Kit

#### Growth Factors and Cytokines (many)

Monoclonal and Polyclonal Antibodies (many)