

STOX1 Antibody (CT)

ALTERNATE NAMES:	Storkhead-box protein 1, C10orf24, winged-helix domain-containing protein, PEE4
CATALOG #:	5397-100
AMOUNT:	100 µg
HOST:	Rabbit
ISOTYPE:	IgG
IMMUNOGEN:	STOX1 antibody was raised against a 14 amino acid synthetic peptide near the carboxy terminus of human STOX1.
PURIFICATION:	Affinity chromatography purified via peptide column
FORMULATION:	100 µg (1 mg/ml) in 1X PBS containing 0.02 % sodium azide.
SPECIES REACTIVITY:	Human
STORAGE CONDITIONS:	Can be stored at 4°C for three months. For long term storage, store at -20°C. Avoid freeze/thaw cycles.

DESCRIPTION:

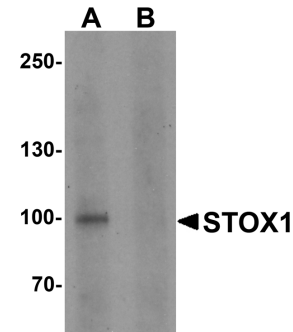
STOX1 (Storkhead box 1), also known as PEE4 or C10orf24, is a winged-helix domain containing transcription factor believed to play a role in the differentiation of stem cells. As a DNA-binding protein, STOX1 exists as three alternatively spliced isoforms, designated A, B and C, all of which localize to either the cytoplasm or the nucleus. Defects in STOX1 are the cause of pre-eclampsia/eclampsia 4 (PEE4), also known as gestational proteinuric hypertension. STOX1 was also found to be functionally involved in late-onset Alzheimer's disease.

SPECIFICITY: STOX1 antibody is human reactive. At least three alternatively spliced transcript variants encoding distinct isoforms have been observed. STOX1 antibody recognize the longest isoform.

APPLICATION: Western Blot: 1 µg/ml, ELISA

Note: *This information is only intended as a guide. The optimal dilutions must be determined by the user*

FOR RESEARCH USE ONLY! Not to be used on humans.



Western blot analysis of STOX1 in human liver tissue lysate with STOX1 antibody at 1 µg/ml in (A) the absence and (B) the presence of blocking peptide.

RELATED PRODUCTS:

- STOX2 Antibody (Cat No. 3382-100)
- STOX2 Blocking peptide (Cat No. 3382BP-50)