

## Anti-TGF- $\beta$ 1 Polyclonal Antibody

<b>CATALOG NO:</b>	5559-30T      30 $\mu$ g (Trial size) 5559-100      100 $\mu$ g
<b>INTERNAL ID:</b>	BV-935
<b>AMOUNT:</b>	100 $\mu$ g
<b>ANTIBODY TYPE:</b>	Polyclonal
<b>HOST:</b>	Rabbit
<b>IMMUNOGEN:</b>	Synthetic peptide surrounding amino acid 374 of human TGF- $\beta$ 1
<b>SPECIES REACTIVITY:</b>	Tested in Human samples

**FORMULATION:**

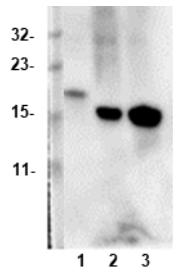
In phosphate buffered saline (PBS), pH 7.2, containing 30% glycerol, 0.5% BSA, 0.5 mM EDTA and 0.03% proclin.

**STORAGE CONDITIONS:**

Store at -20 °C. For long term storage, aliquot and freeze at -70 °C. Avoid repeated freeze/thaw cycles.

**BACKGROUND:** TGF- $\beta$  (transforming growth factor-beta) is a family of multifunctional proteins. TGF- $\beta$  was originally identified for its ability to induce the growth of normal rodent fibroblast in soft agar. It is now known that TGF- $\beta$  is a potent growth inhibitor of many normal and transformed cell lines. It regulates normal cell growth, development and tissue remodeling following injury. TGF- $\beta$  is produced as latent high molecular weight complexes. The activation of latent TGF- $\beta$  is an important step in the regulation of its action.

**APPLICATION AND USAGE:** The antibody can be used for Western blot analysis. However, the optimal conditions should be determined individually. Reactivity in other species is not tested



Western blot analysis of human recombinant TGF- $\beta$ 1 (Lane 1), human kidney (Lane 2), and human spleen (Lane 3) tissue lysates was performed using Anti-TGF- $\beta$ 1 Polyclonal antibody

**RELATED PRODUCTS:**

TGF-beta Receptor I Antibody (5636R)  
TGF-beta Receptor II Antibody (5639R)  
TGF-beta Receptor III Antibody (5642)  
TGF-beta2 Antibody (5343R)  
TGF-beta3 Antibody (5344R)  
TGF-alpha Antibody (5339)

**FOR RESEARCH USE ONLY! Not to be used on humans.**