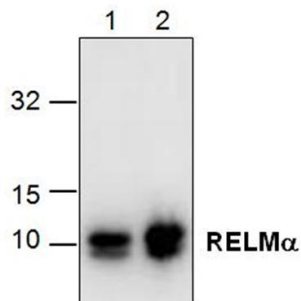


## Murine RELM $\alpha$ Polyclonal Antibody

<b>CATALOG NO:</b>	5631-30T      30 $\mu$ g (Trial size) 5631-100      100 $\mu$ g
<b>CONCENTRATION:</b>	0.5 mg/ml
<b>IMMUNOGEN:</b>	<i>E. coli</i> expressed recombinant murine RELM $\alpha$ (Cat. No. 4631-20)
<b>INTERNAL ID:</b>	BV- E34G
<b>HOST:</b>	Rabbit
<b>SPECIES REACTIVITY:</b>	Mouse
<b>PURIFICATION:</b>	Affinity purified rabbit IgG
<b>FORMULATION:</b>	Supplied in phosphate buffered saline (PBS), pH 7.2, containing 30% glycerol, 0.5% BSA, 0.01% thimerosal
<b>STORAGE CONDITIONS:</b>	Store at -20°C. For long term storage, aliquot and freeze at -70°C. Avoid repeated freeze/thaw cycles.
<b>DESCRIPTION:</b>	RELM-alpha belongs to a unique family of tissue-specific cytokines termed FIZZ (found in inflammatory zone) and RELM. The three known members of this family; Resistin, RELM-alpha and RELM-beta are 85-94 amino acid secreted proteins sharing a conserved C-terminal domain characterized by 10 cysteine residues with a unique spacing motif of C-X11-C-X8-C-X-C-X3-C-X10-C-X-C-X-C-X9-C-C. RELM-alpha and Resistin are secreted exclusively by adipocytes while RELM-beta is expressed in the epithelium of the colon and small bowel. The physiological role and molecular targets of RELM-alpha are still unknown. Murine RELM-alpha is a 10.0 kDa monomeric protein containing 88 amino acid residues
<b>APPLICATION:</b>	Western blot: 0.5-4 $\mu$ g/ml ( <b>Note: This information is only intended as a guide. The optimal dilutions must be determined by the user.</b> )



### RELATED PRODUCTS:

#### Apoptosis Detection Kits & Reagents

- Annexin V Kits & Bulk Reagents
- Caspase Assay Kits & Reagents
- Mitochondrial Apoptosis Kits & Reagents
- Nuclear Apoptosis Kits & Reagents
- Apoptosis Inducers and Set
- Apoptosis siRNA Vectors

#### Cell Fractionation System

- Mitochondria/Cytosol Fractionation Kit
- Nuclear/Cytosol Fractionation Kit
- Membrane Protein Extraction Kit
- Cytosol/Particulate Rapid Separation Kit
- Mammalian Cell Extraction Kit
- FractionPREP Fractionation System

#### Cell Proliferation & Senescence

- Quick Cell Proliferation Assay Kit
- Senescence Detection Kit
- High Throughput Apoptosis/Cell Viability Assay Kits
- LDH-Cytotoxicity Assay Kit
- Bioluminescence Cytotoxicity Assay Kit
- Live/Dead Cell Staining Kit

#### Cell Damage & Repair

- HDAC Fluorometric & Colorimetric Assays & Drug Discovery Kits
- HAT Colorimetric Assay Kit & Reagents
- DNA Damage Quantification Kit
- Glutathione & Nitric Oxide Fluorometric & Colorimetric Assay Kits

#### Signal Transduction

- cAMP & cGMP Assay Kits
- Akt & JNK Activity Assay Kits
- Beta-Secretase Activity Assay Kit

#### Adipocyte & Lipid Transfer

- Recombinant Adiponectin, Survivin, & Leptin
- CETP Activity Assay & Drug Discovery Kits
- PLTP Activity Assay & Drug Discovery Kits
- Total Cholesterol Quantification Kit

#### Molecular Biology & Reporter Assays

- siRNA Vectors
- Cloning Insert Quick Screening Kit
- Mitochondrial & Genomic DNA Isolation Kits
- 5 Minutes DNA Ligation Kit
- 20 Minutes Gel Staining/Destaining Kit
- $\beta$ -Galactosidase Staining Kit & Luciferase Reporter Assay Kit

#### Growth Factors and Cytokines

#### Monoclonal and Polyclonal Antibodies