

# TCR- $\beta$ Polyclonal Antibody

<b>CATALOG NO:</b>	5651- 30	30 $\mu$ g (Trial size)
	5651-100	100 $\mu$ g
<b>CONCENTRATION:</b>	0.5 mg/ml	
<b>HOST:</b>	Rabbit	
<b>IMMUNOGEN:</b>	Synthetic peptide surrounding amino acid 114 of human TCR- $\beta$	
<b>INTERNAL ID:</b>	BV-419	
<b>PURIFICATION:</b>	Affinity purified rabbit IgG	
<b>FORM:</b>	Liquid	
<b>FORMULATION:</b>	0.5 mg/ml of antibody in PBS pH 7.2, pH 7.2, containing 30% glycerol, 0.5% BSA, 5 mM EDTA and 0.03% proclin.	
<b>SPECIES REACTIVITY:</b>	Human, Mouse, Rat	
<b>STORAGE CONDITIONS:</b>	Store at -20°C. Avoid repeated freeze/thaw cycles.	

## BACKGROUND DESCRIPTION:

TCR (T cell antigen receptor) recognizes foreign antigens and translates such recognition events into intracellular signals that elicit a change in the cell from a dormant to an activated state. TCR is a heterodimer composed of either  $\alpha$  and  $\beta$  or  $\gamma$  and  $\delta$  chains. The vast majority of circulating T cells (95%) express the  $\alpha/\beta$  heterodimer while roughly 2-5% express the  $\gamma/\delta$  heterodimer. CD3 chains and the CD4 or CD8 coreceptors are also required for efficient signal transduction through the TCR.

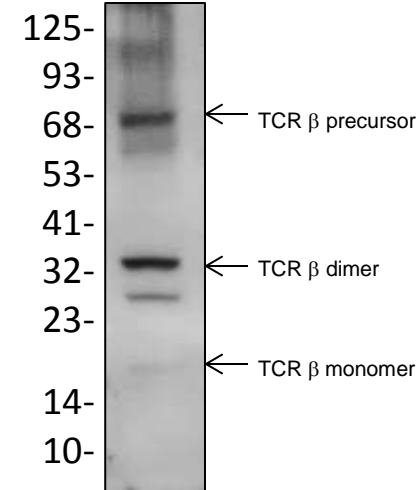
## SPECIFICITY:

The antibody recognizes multiple TCR- $\beta$  forms including 17 kDa monomer, 34 kDa dimer and the 68 kDa precursor forms. Jurkat cell lysate can be used as a positive control.

## APPLICATION:

The antibody can be used in Western blotting (0.5-4  $\mu$ g/ml). Based on researcher's feedback, the antibody can also be used in immunoprecipitation (10-20  $\mu$ g/ml); and immunohistochemistry (15-25  $\mu$ g/ml). However, the optimal concentrations should be determined individually.

**Note: This information is only intended as a guide. The optimal dilutions must be determined by the user.**



**Western blot analysis with TCR  $\beta$  antibody (5651-100) using Jurkat cell lysate (60  $\mu$ g).**

## RELATED PRODUCTS:

- TCR beta Blocking Peptide (5651BP-50)
- TCR alpha antibody (5648-100)
- TCR alpha Blocking Peptide (5648BP-50)

**FOR RESEARCH USE ONLY! Not to be used on humans.**