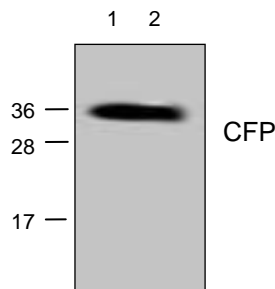


## Anti-CFP Polyclonal Antibody

|                            |                                                                                                                                                                                                                                                                                                                                                                                                                                                                                                                                             |
|----------------------------|---------------------------------------------------------------------------------------------------------------------------------------------------------------------------------------------------------------------------------------------------------------------------------------------------------------------------------------------------------------------------------------------------------------------------------------------------------------------------------------------------------------------------------------------|
| <b>CATALOG NO:</b>         | 5986-30T      30 µg (Trial size)<br>5986-100      100 µg                                                                                                                                                                                                                                                                                                                                                                                                                                                                                    |
| <b>CONCENTRATION:</b>      | 0.5 mg/ml                                                                                                                                                                                                                                                                                                                                                                                                                                                                                                                                   |
| <b>IMMUNOGEN:</b>          | <i>E. coli</i> expressed Cyan Fluorescent Protein (Cat. No. 4996-100)                                                                                                                                                                                                                                                                                                                                                                                                                                                                       |
| <b>INTERNAL ID:</b>        | BV- D2G                                                                                                                                                                                                                                                                                                                                                                                                                                                                                                                                     |
| <b>HOST:</b>               | Rabbit                                                                                                                                                                                                                                                                                                                                                                                                                                                                                                                                      |
| <b>SPECIES REACTIVITY:</b> | Human                                                                                                                                                                                                                                                                                                                                                                                                                                                                                                                                       |
| <b>PURIFICATION:</b>       | Affinity purified rabbit IgG                                                                                                                                                                                                                                                                                                                                                                                                                                                                                                                |
| <b>FORMULATION:</b>        | Supplied in phosphate buffered saline (PBS), pH 7.2, containing 30% glycerol, 0.5% BSA, and 0.01% thimerosal.                                                                                                                                                                                                                                                                                                                                                                                                                               |
| <b>STORAGE CONDITIONS:</b> | Store at -20° C. For long term storage, aliquot and freeze at -70° C. Avoid repeated freeze/thaw cycles.                                                                                                                                                                                                                                                                                                                                                                                                                                    |
| <b>DESCRIPTION:</b>        | The recombinant CFP (Cyan Fluorescent Protein) is expressed and purified from transformed <i>E. coli</i> using a method that ensures high purity and maximal CFP fluorescence. The protein is suitable as a control reagent for CFP expression studies or as a labeling reagent. Applications include: Use as standards for SDS-PAGE, Western blot analysis of CFP transfected cells, label other proteins, calibration of fluorometers and flow cytometers, fluorescence microscope, or microinjection of CFP into cells and tissues, etc. |
| <b>APPLICATION:</b>        | Western blotting: 0.5-4 µg/ml. The antibody has a minimum cross-reactivity (<5%) with Yellow fluorescent Protein (YFP, Cat. No. 4998-100).<br><br><b>Note: This information is only intended as a guide. The optimal dilutions must be determined by the user.</b>                                                                                                                                                                                                                                                                          |



Western blot analysis using recombinant CFP:

Lane 1: 100 ng

Lane 2: 50 ng

### RELATED PRODUCTS:

#### Apoptosis Detection Kits & Reagents

- Annexin V Kits & Bulk Reagents
- Caspase Assay Kits & Reagents
- Mitochondrial Apoptosis Kits & Reagents
- Nuclear Apoptosis Kits & Reagents
- Additional Apoptosis Kits & Reagents

#### Cell Fractionation System

- Mitochondria/Cytosol Fractionation Kit
- Nuclear/Cytosol Fractionation Kit
- Membrane Protein Extraction Kit
- Cytosol/Particulate Rapid Separation Kit
- Mammalian Cell Extraction Kit
- FractionPREP Fractionation System

#### Cell Proliferation & Senescence

- Quick Cell Proliferation Assay Kit
- Senescence Detection Kit
- High Throughput Apoptosis/Cell Viability Assay Kits
- LDH-Cytotoxicity Assay Kit
- Bioluminescence Cytotoxicity Assay Kit
- Live/Dead Cell Staining Kit

#### Cell Damage & Repair

- HDAC Fluorometric & Colorimetric Assays & Drug Discovery Kits
- HAT Colorimetric Assay Kit & Reagents
- DNA Damage Quantification Kit
- Glutathione Fluorometric & Colorimetric Assay Kits
- Nitric Oxide Fluorometric & Colorimetric Assay Kits

#### Signal Transduction

- Camp & cGMP Assay Kits
- Akt & JNK Activity Assay Kits
- Beta-Secretase Activity Assay Kit

#### Adipocyte & Lipid Transfer

- Recombinant Adiponectin, Survivin, & Leptin
- CETP & PLTP Activity Assay & Drug Discovery Kits
- Total Cholesterol Quantification Kit

#### Molecular Biology & Reporter Assays

- siRNA Vectors
- Cloning Insert Quick Screening Kit
- Mitochondrial & Genomic DNA Isolation Kits
- 5 Minutes DNA Ligation Kit
- 20 Minutes Gel Staining/Destaining Kit

#### Antibodies & Recombinant Proteins (many)

FOR RESEARCH USE ONLY. Not to be used on humans