

EZH1 Polyclonal Antibody

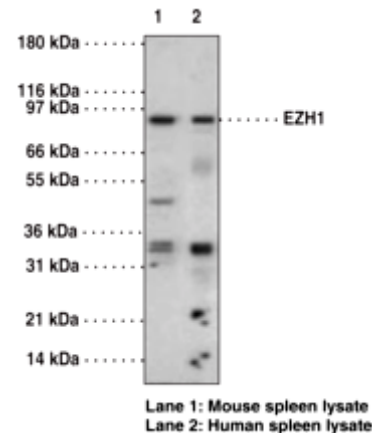
ALTERNATE NAMES:	Enhancer of zeste homolog 1 (Drosophila), ENX-2, ENX2, EZH1, Histone-lysine N-methyltransferase EZH1, KIAA0388
CATALOG #:	6123-50
AMOUNT:	50 µg
HOST:	Rabbit
ISOTYPE:	IgG
IMMUNOGEN:	Synthetic peptides of human EZH1
PURIFICATION:	Protein-G purified
FORMULATION:	50 µg of antibody in 100 µl PBS containing 0.05% BSA and 0.05% sodium azide.
SPECIES REACTIVITY:	Human, Mouse
STORAGE CONDITIONS:	Can be stored at 4°C for 6 months. For long term storage, store at -20°C. Avoid freeze/thaw cycles.

DESCRIPTION: EZH1 is a human homolog of the Drosophila gene Enhancer of zeste E(z), a member of the polycomb group of transcriptional repressors. In mice, EZH1 is a regulator of homeotic gene expression implicated in the assembly of repressive protein complexes in chromatin. The strong sequence conservation between species suggests potential role for EZH1 in human development as a transcriptional regulator and as a component of protein complexes that stably maintain heterochromatin.

SPECIFICITY: Human, Mouse EZH1.

APPLICATION: Western blot: 1-2 µg/ml

Note: *This information is only intended as a guide. The optimal dilutions must be determined by the user*



WB using EZH1 pAb.

RELATED PRODUCTS:

- EZH2 Antibody (Cat. No. 3242-100)
- EZH2 Blocking Peptide (Cat. No. 3242BP-50)
- 3-Deazaneplanocin (Cat. No. 2060-250, -1000)
- GSK343 (Cat. No. 2281-1, -5)
- GSK126 (Cat. No. 2282-1, -5)

FOR RESEARCH USE ONLY! Not to be used on humans.