

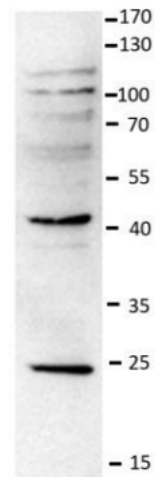
UCHL1 Polyclonal Antibody

ALTERNATE NAMES:	Neuron cytoplasmic protein 9.5, PARK5, PGP9.5, PGP 9.5, Ubiquitin carboxyl-terminal, hydrolase isozyme L1, Ubiquitin thioesterase L1, UCH-L1, Ubiquitin thioesterase L1.
CATALOG #:	6130-50
AMOUNT:	50 µg
HOST:	Chicken
ISOTYPE:	IgY
IMMUNOGEN:	Recombinant full length protein
PURIFICATION:	Purified from Egg Yolk
FORM:	Liquid
FORMULATION:	50 µg of antibody in PBS containing 10% glycerol
PREDICTED MW:	25 kDa
SPECIES REACTIVITY:	Human
STORAGE CONDITIONS:	Store at -20°C. Do not aliquot the antibody.

DESCRIPTION: Protein ubiquitination and Deubiquitination are reversible processes catalyzed by ubiquitinating enzymes (UBEs) and deubiquitinating enzymes (DUBs). DUBs are categorized into 5 subfamilies: USP, UCH, OTU, MJD, and JAMM. UCHL1, UCHL3, UCHL5/UCH37, and BRCA-1-associated protein-1 (BAP1) belong to the UCH family of DUBs, which all possess a conserved catalytic domain (UCH domain) of about 230 amino acids. Although UCHL1 and UCHL3 are the most closely related UCH family members with about 53% identity, their biochemical properties differ in that UCHL1 binds monoubiquitin and UCHL3 shows dual specificity toward both ubiquitin (Ub) and NEDD8, a Ub-like molecule. UCHL1 (PGP9.5) is a 25 kDa protein; it is highly specific to neurons and to cells of the diffuse neuroendocrine system and their tumors. It comprises >1% of total brain protein but is almost absent from other tissues. It has been implicated both in Parkinson's disease and in lung cancer.

SPECIFICITY:	Human
APPLICATION:	Western blot: Robust detection of 100 ng of recombinant protein was possible when antibody was used at a final concentration of 5 µg/mL

Note: This information is only intended as a guide. The optimal dilutions must be determined by the user.



Western blot analysis with crude HEK293 cell lysate

RELATED PRODUCTS:

- UCHL3 Polyclonal Antibody (Cat. No. 6128-50)
- UCHL5 Polyclonal Antibody (Cat. No. 6129-50)
- Human Recombinant UCHL1 (Cat. No. 6306-100)
- Human Recombinant UCHL3 (Cat. No. 6358-100)
- Human Recombinant UCHL5 (Cat. No. 6359-100)
- UbcH1, human recombinant (GST-tag) (Cat. No. 4846-10, -100)
- UbcH5a, human recombinant (His-tag) (Cat. No. 4851-10, -100)
- UbcH5b, human recombinant (His-tag) (Cat. No. 4852-10, -100)
- UCHL1, human recombinant (GST-tag) (Cat. No. 4855-50)
- Human recombinant UBE2D3 (UbcH5c) (Cat. No. 6430-3)
- Human recombinant UBE2L3 (UbcH7) (Cat. No. 6431-3)
- Human recombinant UBE2K (UbcH1) (Cat. No. 6432-3)
- Yeast recombinant Ubc13 (UBE2N) (Cat. No. 6433-3)
- Yeast recombinant Mms2 (UEV-2) (Cat. No. 6434-3)
- Human recombinant UBE2D2 (UbcH5b) (Cat. No. 6435-3)
- Human recombinant UBE2R1 (CDC34) (Cat. No. 6436-3)
- Human recombinant UBE2E2 (UbcH8) (Cat. No. 6438-3)
- Human recombinant UBE2E3 (UbcH9) (Cat. No. 6439-3)
- Human recombinant UBE2H (UbcH2) HIS (Cat. No. 6440-3)
- Human recombinant UBE2H (UbcH2), HIS₆SUMO (Cat. No. 6441-3)

FOR RESEARCH USE ONLY! Not to be used on humans.

