

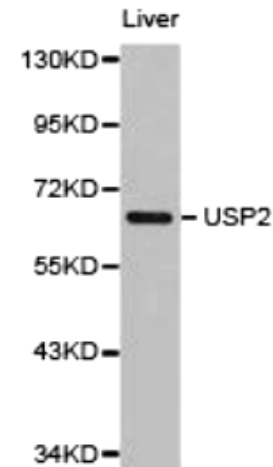
# USP2 Polyclonal Antibody

<b>ALTERNATE NAMES:</b>	USP2, UBP41, USP9
<b>CATALOG #:</b>	6141-100
<b>AMOUNT:</b>	100 µg
<b>HOST:</b>	Rabbit
<b>ISOTYPE:</b>	IgG
<b>IMMUNOGEN:</b>	Fusion protein of human USP2
<b>PURIFICATION:</b>	Affinity purified
<b>MOLECULAR WEIGHT:</b>	68 kDa
<b>FORM:</b>	Liquid
<b>FORMULATION:</b>	100 µg of antibody in 100 µl PBS containing 0.02% sodium azide, 50% glycerol, pH 7.3
<b>SPECIES REACTIVITY:</b>	Human, Mouse, Rat
<b>STORAGE CONDITIONS:</b>	Can be stored at -20°C or -80°C. Avoid repeated freeze/thaw cycles.

**DESCRIPTION:** Ubiquitinating enzymes (UBEs) catalyze protein ubiquitination, a reversible process countered by deubiquitinating enzymes (DUB) action. There are five DUB subfamilies including the USP, UCH, OTU, MJD, and JAMM enzymes. Ubiquitin-specific-processing protease 2 (USP2) belongs to the USP (UBP/UCH type 2) subfamily and is characterized by its C19 peptidase activity, which is involved in ubiquitin recycling and in the disassembly of various forms of polymeric ubiquitin and ubiquitin like protein complexes. There is mounting evidence that USP2 functions as an oncoprotein through multiple mechanisms. In human prostate cancer, USP2 is highly overexpressed and drives tumor growth by binding to and stabilizing fatty acid synthase through deubiquitination. It has also been demonstrated that USP2 can bind and deubiquitinate both Mdm2 and cyclin D1, which leads to their stabilization and enhanced cell proliferation.

<b>SPECIFICITY:</b>	Cross reacts with human, mouse and rat samples.
<b>APPLICATION:</b>	Western blot: 1:200 – 1:500 dilution, IHC: 1:50 - 1:100 dilution, IF: 1:20 – 1:50

**Note:** This information is only intended as a guide. The optimal dilutions must be determined by the user



WB of liver cell lysate with USP2 pAb.

#### RELATED PRODUCTS:

- USP1 Polyclonal Antibody (Cat. No. 6140-100)
- USP3 Polyclonal Antibody (Cat. No. 6142-100)
- USP25 Polyclonal Antibody (Cat. No. 6143-100)
- USP4 Polyclonal Antibody (Cat. No. 6131-50)
- USP5 Polyclonal Antibody (Cat. No. 6132-50)
- USP7 Polyclonal Antibody (Cat. No. 3747-100)
- USP8 Polyclonal Antibody (Cat. No. 6133-50)
- USP14 Polyclonal Antibody (Cat. No. 6134-50)
- USP15 Polyclonal Antibody (Cat. No. 6135-50)

**FOR RESEARCH USE ONLY! Not to be used on humans.**