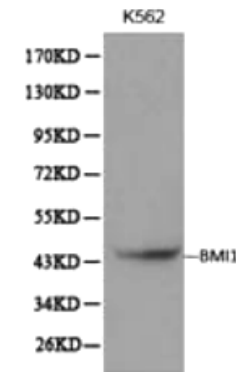


## BMI1 Polyclonal Antibody

<b>CATALOG NO:</b>	6150-100
<b>ALTERNATE NAMES:</b>	PcG protein BMI1, RING finger protein 51, RNF51, PCGF4.
<b>AMOUNT:</b>	100 µl
<b>IMMUNOGEN:</b>	Recombinant protein of human BMI1
<b>HOST/ISOTYPE:</b>	Rabbit/IgG
<b>PURIFICATION:</b>	Affinity purified
<b>MOLECULAR WEIGHT:</b>	37 kDa
<b>FORM:</b>	Liquid
<b>FORMULATION:</b>	100 µl of antibody in PBS containing 0.02% sodium azide, 50% glycerol, pH 7.3
<b>SPECIES REACTIVITY:</b>	Human, Mouse, Rat
<b>STORAGE CONDITIONS:</b>	Store at -20°C. For long term storage, aliquot and freeze at -80°C. Avoid repeated freeze/defrost cycles.
<b>DESCRIPTION:</b>	The polycomb group (PcG) of proteins contributes to the maintenance of cell identity, stem cell self-renewal, cell cycle regulation, and oncogenesis by maintaining the silenced state of genes that promote cell lineage specification, cell death, and cell cycle arrest. PcG proteins exist in two complexes that cooperate to maintain long term gene silencing through epigenetic chromatin modifications. The first complex, EED-EZH2, is recruited to genes by DNA-binding transcription factors and methylates histone H3 on Lys27. This histone methyl-transferase activity requires the Ezh2, Eed, and Suz12 subunits of the complex. Histone H3 methylation at Lys27 facilitates the recruitment of the second complex, PRC1, which ubiquitinylates histone H2A on Lys119. Bmi1 is a component of the PRC1 complex, which together with Ring1 strongly enhances the E3 ubiquitin ligase activity of the Ring2 catalytic subunit. Bmi1 plays an important role in the regulation of cell proliferation and senescence through repression of the p16 INK4A and p19 ARF genes and is required for maintenance of adult hematopoietic and neural stem cells.
<b>APPLICATION:</b>	Western blot: 1:500–1:2000, IHC: 1:50–1:200, IF 1:50-1:200

**Note:** This information is only intended as a guide. The optimal dilutions must be determined by the user.



WB of K562 cell extract with BMI1 polyclonal antibody

### RELATED PRODUCTS:

- EZH1 Polyclonal Antibody (Cat. No. 6123-50)
- EZH2 Antibody (Cat. No. 3242-100)
- EZH2 Blocking Peptide (Cat. No. 3242BP-50)
- 3-Deazaneplanocin (Cat. No. 2060-250, -1000)
- GSK343 (Cat. No. 2281-1, -5)
- GSK126 (Cat. No. 2282-1, -5)

**FOR RESEARCH USE ONLY! Not to be used on humans.**