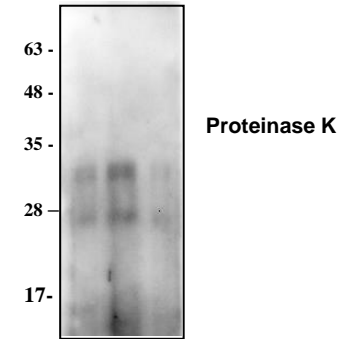


Proteinase K Polyclonal Antibody

CATALOG NO:	6210-30T 30 µg (Trial size) 6210-100 100 µg
CONCENTRATION:	0.5 mg/ml
IMMUNOGEN:	Recombinant proteinase K
INTERNAL ID:	BV-L62
HOST:	Rabbit
MOLECULAR WEIGHT:	28.9 kDa
PURIFICATION:	Affinity purified
SPECIES REACTIVITY:	Tritirachium album
FORM:	Liquid
FORMULATION:	0.5 mg/ml polyclonal antibody in phosphate-buffered saline (PBS pH 7.2), containing 30% glycerol, 0.5% BSA, 0.5 mM EDTA, and 0.03% Proclin.
STORAGE CONDITIONS:	Store at -20 °C. For long-term storage, aliquot and freeze at -70 °C. Avoid repeated freeze/thaw cycles.
BACKGROUND:	Proteinase K is a serine protease that displays the ability to digest native proteins, thereby inactivating enzymes such as DNase and RNase without recourse to a denaturation process.
SPECIFICITY:	The antibody recognizes proteinase K active form and precursor of Tritirachium album proteinase. Reactivity with other species has not been determined.
APPLICATION:	The antibody has been tested in Western blotting (3-6 µg/ml). However, the optimal concentrations should be determined individually. Other applications have not been determined.



Western blot analysis of recombinant proteinase K

RELATED PRODUCTS:

- PFU DNA polymerase (**Cat. No. 9003-500, -2500**)
- T4 DNA Ligase (5 u/µl) (**Cat. No. 9101-250**)
- Taq DNA polymerase (**Cat. No. 9001-500, -2500**)
- TurboNuclease, Recombinant (**Cat. No. 9207-50KU**)
- Turbo3C (HRV3C) Protease, Recombinant (**Cat. No. 9206-1**)
- TurboTEV Protease, Recombinant (**Cat. No. 9205-1**)

FOR RESEARCH USE ONLY! Not to be used on humans.