

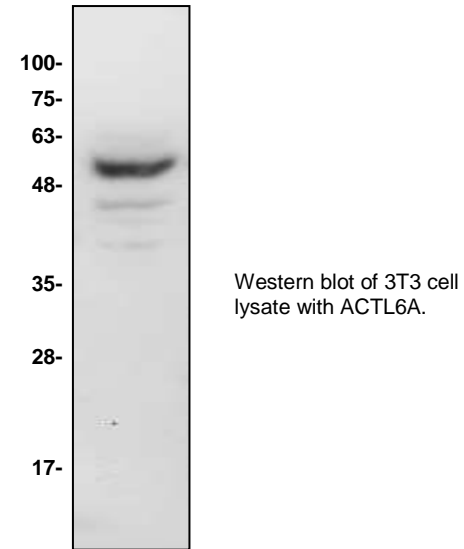
ACTL6A Antibody

CATALOG NO:	6284-30T 30 µg (Trial size) 6284-100 100 µg
ALTERNATE NAMES:	53 kDa BRG1-associated factor A, Actin-related protein Baf53a, ArpNbeta, BRG1-associated factor 53A
CONCENTRATION:	0.5 mg/ml
HOST:	Rabbit
ISOTYPE:	IgG
IMMUNOGEN:	Synthetic peptide at N-terminal (BV-M39)
PURIFICATION:	Affinity purified rabbit IgG
FORM:	Liquid
FORMULATION:	0.5 mg/ml of antibody in PBS, 0.01 % BSA, 0.01 % thimerosal, and 50 % glycerol, pH 7.2
SPECIES REACTIVITY:	Human, Mouse and Rat.
STORAGE CONDITIONS:	Store for 1 year at -20°C from date of shipment. Avoid repeated freeze/thaw cycles.

DESCRIPTION: Actin-like protein 6A is a protein that in humans is encoded by the *ACTL6A* gene. This gene encodes a family member of actin-related proteins (ARPs), which share significant amino acid sequence identity to conventional actins. Both actins and ARPs have an actin fold, which is an ATP-binding cleft, as a common feature. The ARPs are involved in diverse cellular processes, including vesicular transport, spindle orientation, nuclear migration and chromatin remodeling. This gene encodes a 53 kDa subunit protein of the BAF (BRG1/brm-associated factor) complex in mammals, which is functionally related to SWI/SNF complex in *S. cerevisiae* and *Drosophila*; the latter is thought to facilitate transcriptional activation of specific genes by antagonizing chromatin-mediated transcriptional repression. Together with beta-actin, it is required for maximal ATPase activity of BRG1, and for the association of the BAF complex with chromatin/matrix.

APPLICATION: Western blot: 1:200

Note: This information is only intended as a guide. The optimal dilutions must be determined by the user.



RELATED PRODUCTS:

- ACTL6A Blocking Peptide (**Cat. No. 6284BP-50**)
- Recombinant Human BrdT (**Cat. No. 7641-20, 100, -1000**)
- Recombinant Human BRD4 (**Cat. No. 7644-20, 100, -1000**)
- Human recombinant BRD1 bromodomain (**Cat. No. 7645-20, 100**)
- Human recombinant BRD2 bromodomains 1 (**Cat. No. 7646-20, 100**)
- Human recombinant BRD2 bromodomain 1 and 2 (**Cat. No. 7647-20, 100**)
- Human recombinant BRD2 bromodomain 2 (**Cat. No. 7648-20, 100**)
- Human recombinant BRD9 bromodomain (**Cat. No. 7649-20, 100**)
- Bromodomain Inhibitor, (+)-JQ1 (**Cat. No. 2070-1, -5**)
- BRD8 Antibody (**Cat. No. 3738-100**)
- BRD8 Antibody (**Cat. No. 3506-100**)
- BRD8 Blocking Peptide (**Cat. No. 3506BP-50**)

FOR RESEARCH USE ONLY! Not to be used on humans.