

CETP Polyclonal Antibody

CATALOG NO:	6606-30T	30 µg (Trial size)
	6606-200	200 µg
CONCENTRATION:	0.5 mg/ml	
IMMUNOGEN:	Recombinant CETP	
INTERNAL ID:	BV-L58	
HOST:	Rabbit	
PURIFICATION:	Affinity purified	
FORM:	Liquid	
FORMULATION:	0.5 mg/ml polyclonal antibody in PBS pH 7.2, containing 30% glycerol, 0.5% BSA and 0.01% thimerosal.	
STORAGE CONDITIONS:	Store at -20°C. For long-term storage, aliquot and freeze at -70°C. Avoid repeated freeze/thaw cycles.	
SPECIES REACTIVITY:	Human, Mouse, Rat, Rabbit	

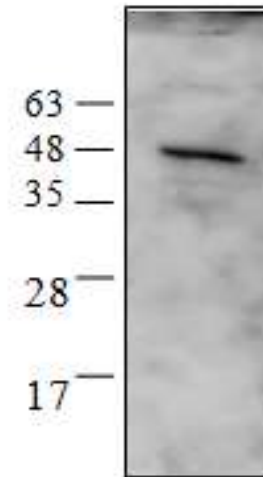
DESCRIPTION:

It has been proposed that high density lipoproteins (HDLs) function along with Lecithin, cholesterol acyltransferase and CETP to facilitate cholesterol transport from tissues to the liver. CETP is responsible for neutral lipid transfer activity in plasma in numerous species. Since CETP is able to accelerate specifically the exchange of lipid components between pro and anti-atherogenic lipoprotein fractions, it may be a key determinant of the global atherogenicity of the plasma lipoprotein profile and arises as a possible target in atherosclerosis prevention. CETP has an important role in reverse cholesterol transport and shaping and affecting the composition of plasma lipoproteins. In general elevated levels of CETP have been associated with increased risk of coronary heart disease.

APPLICATION AND USAGE:

The antibody can be used in Western Blot analysis (2-6 µg/ml). However, the optimal concentrations should be determined individually.

FOR RESEARCH USE ONLY! Not to be used in humans.



Western blot analysis of CETP using Mouse 3T3 cell lysate

RELATED PRODUCTS:

- CETP, Human recombinant (Cat. No. 7606-20, -100, -1000)
- CETP Activity Assay Kit (Cat. No. K601-100)
- CETP Drug Screening Kit (Cat. No. K602-100)
- CETP Antibody (Cat. No. 3413-100)
- CETP Blocking Peptide (Cat. No. 3413BP-50)