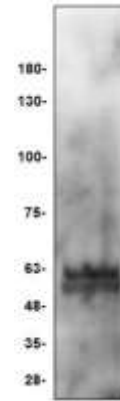


EDEM2 Antibody

CATALOG NO:	6633-30T 30 µg (Trial size) 6633-100 100 µg
ALTERNATE NAME:	ER degradation-enhancing alpha-mannosidase-like protein 2
CONCENTRATION:	0.5 mg/ml
IMMUNOGEN:	Synthetic peptide C-terminal
INTERNAL ID:	BV- M15
HOST:	Rabbit
SPECIES REACTIVITY:	Human, Mouse, Rat
PURIFICATION:	Affinity purified rabbit IgG
FORMULATION:	Supplied in PBS, 0.01 % BSA, 0.01 % thimerosal and 50 % glycerol, pH7.2
STORAGE CONDITIONS:	Store at -20° C. For long term storage, aliquot and freeze at -70° C. Avoid repeated freeze/thaw cycles.
DESCRIPTION:	Proteins expressed in the endoplasmic reticulum (ER) are tightly regulated by a variety of quality control mechanisms. Terminally misfolded proteins in the ER are retrotranslocated to the cytoplasm and degraded by proteasomes through a mechanism known as ER-associated degradation (ERAD). EDEM2 (ER degradation-enhancing alpha-mannosidase-like 2) is a 578 amino acid secreted protein that, in conjunction with other EDEM proteins (namely EDEM and EDEM3), is involved in the ERAD pathway of protein degradation. EDEM2, a member of the glycosyl hydrolase 47 family, contains a mannosidase homology domain, an N-terminal cleavable signal sequence and a C-terminal extension that is required for both ER retention and the proper function of EDEM2. Human EDEM2 shares 93% sequence identity with its mouse homolog, suggesting a conserved role between species. Two isoforms of EDEM2 exist due to alternative splicing events.
APPLICATION:	Western blot: 1:200

Note: This information is only intended as a guide. The optimal dilutions must be determined by the user.



Western blot of Rat kidney lysate with EDEM2 antibody

RELATED PRODUCTS:

- EDEM2 Blocking Peptide (Cat. No. 6633BP-50)

FOR RESEARCH USE ONLY! Not to be used on humans.