

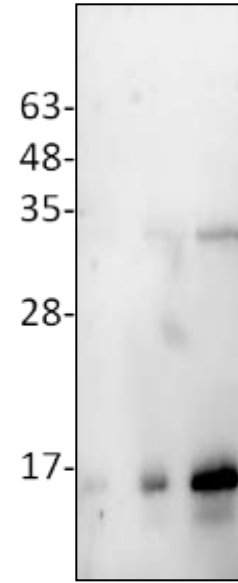
## BRDT Antibody

<b>CATALOG NO:</b>	6642-30T	30 µg (Trial size)
	6642-100	100 µg
<b>ALTERNATE NAMES:</b>	BrdT, Cancer/testis antigen 9, CT9, RING3-like protein	
<b>HOST:</b>	Rabbit	
<b>ISOTYPE:</b>	IgG	
<b>IMMUNOGEN:</b>	Recombinant protein BRDT (257-382 aa) (BV-M72)	
<b>PURIFICATION:</b>	Affinity purified rabbit IgG	
<b>FORM:</b>	Liquid	
<b>FORMULATION:</b>	0.5 mg/ml of antibody in PBS pH 7.2 containing 0.01 % BSA, 0.01 % thimerosal, and 50 % glycerol.	
<b>SPECIES REACTIVITY:</b>	Human.	
<b>STORAGE CONDITIONS:</b>	Store for 1 year at -20°C from date of shipment. Avoid repeated freeze/thaw cycles.	

**DESCRIPTION:** BrdT is similar to the RING3 protein family. It possesses 2 bromodomain motifs and a PEST sequence. The bromodomain is found in proteins that regulate transcription. BrdT drives a meiotic and post-meiotic gene expression program. It also controls the genome-wide post-meiotic genome reorganization that occurs after histone hyperacetylation in elongating spermatids. It may play a role in the transcriptional regulation of spermatogenesis. It also seems to have a structural ATP-independent role in the reorganization of acetylated chromatin.

**APPLICATION:** Western blot: ~ 1:200

**Note:** This information is only intended as a guide. The optimal dilutions must be determined by the user.



**Western blot with BRDT antibody:**

Lane 1: BRDT (257-382 aa) 2ng.  
 Lane 2: BRDT (257-382 aa) 10ng.  
 Lane 3: BRDT (257-382 aa) 50ng

### RELATED PRODUCTS:

- BRDT Antibody (**Cat No. 6643-100**)
- Recombinant Human BrdT (22-138 aa) (**Cat. No. 7641-20, 100, -1000**)
- Recombinant Human BRD4 (**Cat. No. 7644-20, 100, -1000**)
- Human recombinant BRD1 bromodomain (**Cat. No. 7645-20, 100**)
- Human recombinant BRD2 bromodomains 1 (**Cat. No. 7646-20, 100**)
- Human recombinant BRD2 bromodomain 1 and 2 (**Cat. No. 7647-20, 100**)
- Human recombinant BRD2 bromodomain 2 (**Cat. No. 7648-20, 100**)
- Human recombinant BRD9 bromodomain (**Cat. No. 7649-20, 100**)
- Bromodomain Inhibitor, (+)-JQ1 (**Cat. No. 2070-1, -5**)
- BRD8 Antibody (**Cat. No. 3738-100**)
- BRD8 Antibody (**Cat. No. 3506-100**)

**FOR RESEARCH USE ONLY! Not to be used on humans.**