

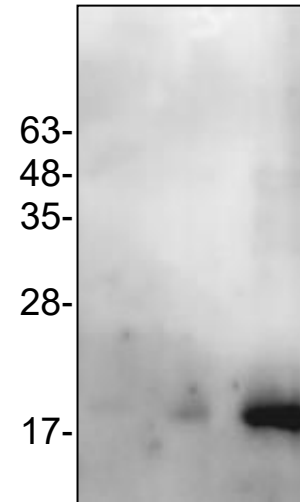
## Anti-SCF Antibody

<b>CATALOG NO:</b>	6646-30T 30 µg (Trial size) 6646-100 100 µg
<b>ALTERNATE NAMES:</b>	Kit ligand Precursor, C-kit ligand, SCF, Mast cell growth factor, MGF, SF, KL-1, Kit l, DKFZp686F2250.
<b>HOST:</b>	Rabbit
<b>ISOTYPE:</b>	IgG
<b>IMMUNOGEN:</b>	Recombinant Human SCF
<b>INTERNAL ID:</b>	BV-M73
<b>PURIFICATION:</b>	Affinity purified rabbit IgG
<b>FORM:</b>	Liquid
<b>FORMULATION:</b>	100 µg (0.5 mg/ml) of antibody in PBS pH 7.2, containing 30% glycerol, 0.5% BSA, 0.5 mM EDTA and 0.03% proclin
<b>SPECIES REACTIVITY:</b>	Human
<b>STORAGE CONDITIONS:</b>	Store for 1 year at -20°C from date of shipment. Avoid repeated freeze/thaw cycles.

**DESCRIPTION:** Stem cell factor / KIT ligand (SCF) is a cytokine which binds CD117(c-Kit). SCF is also known as "steel factor" or "c-kit ligand". SCF exists in two forms; cell surface bound SCF and soluble (or free) SCF. Soluble SCF is produced by the cleavage of surface bound SCF by metalloproteases. SCF is a growth factor important for the survival, proliferation, and differentiation of hematopoietic stem cells and other hematopoietic progenitor cells. One of its roles is to change the BFU-E (burst-forming unit-erythroid) cells, which are the earliest erythrocyte precursors in the erythrocytic series, into the CFU-E (colony-forming unit-erythroid).

**APPLICATION:** Western blot: ~1:200

**Note:** This information is only intended as a guide. The optimal dilutions must be determined by the user.



**Western blot with Anti-SCF antibody**

Lane 1: SCF 2 ng.  
Lane 2: SCF 10 ng.  
Lane 3: SCF 50 ng.

### RELATED PRODUCTS:

- Human Cell<sup>exp</sup> Human Recombinant SCF (Cat # 6478-10, -50)
- SCF, human recombinant (Cat # 4327-10, -50, -1000)
- SCF, murine recombinant (Cat # 4328-10, -50, -1000)
- SCF, rat recombinant (Cat # 4329-10, -50, -1000)
- SCF Antibody (Cat # 5327-100)
- SCF Antibody (Cat # 5328-100)
- SCF Antibody (Cat # 5329R-100)

**FOR RESEARCH USE ONLY! Not to be used on humans.**