

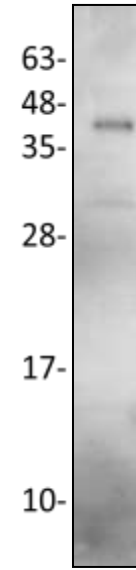
Procathepsin K Antibody

CATALOG NO:	6647-30T 30 µg (Trial size) 6647-100 100 µg
ALTERNATE NAMES:	CTSK, CTSO, CTSO3
HOST:	Rabbit
ISOTYPE:	IgG
IMMUNOGEN:	Recombinant protein Procathepsin (19-329aa)
INTERNAL ID:	BV-M64
PURIFICATION:	Affinity purified rabbit IgG
FORM:	Liquid
FORMULATION:	100 µg (0.5mg/ml) of antibody in PBS pH 7.2, containing 0.01 % BSA, 0.01 % thimerosal, and 50 % glycerol
SPECIES REACTIVITY:	Human.
STORAGE CONDITIONS:	Store for 1 year at -20°C from date of shipment. Avoid repeated freeze/thaw cycles.

DESCRIPTION: Cathepsin K, a member of the papain cysteine proteinase family is the predominant proteinase responsible for the resorption of the bone matrix. Cathepsin cleaves proteins such as collagen type I, collagen type II and osteonectin, thereby playing a role in bone remodeling and resorption in osteoporosis, osteolytic bone metastasis and rheumatoid arthritis (Bromme and Okamoto, 1995; Drake, F. et al 1996; Bossard et al, 1996). Cathepsin K is synthesized as an inactive proenzyme (35.1 kDa) that is converted to its mature active form (23.6 kDa) by proteolytic cleavage of its 99-amino-acid propeptide domain. The in-vitro processing of procathepsin K to mature cathepsin K is autocatalytic.

APPLICATION: Western blot: ~1:200

Note: This information is only intended as a guide. The optimal dilutions must be determined by the user.



Western blot with Procathepsin K antibody.

Procathepsin K (19-329 aa) - 50ng.

RELATED PRODUCTS:

- Procathepsin K, mouse recombinant (**Cat. No. 1027-10, 50, -1000**)
- Cathepsin K activity assay kit (**Cat. No. K141-100**)
- Cathepsin K Antibody (**Cat. No. 3368-100, 3588-100**)
- Cathepsin K Antibody (**Cat. No. 3368BP-50, 3588BP-50**)
- Cathepsin K Antibody (**Cat # 3368-100**)
- Cathepsin K Blocking Peptide (**Cat # 3368BP-50**)
- Cathepsin K Antibody (**Cat # 3588-100**)
- Cathepsin K Blocking Peptide (**Cat # 3588BP-50**)

FOR RESEARCH USE ONLY! Not to be used on humans.