

Prolactin Antibody

CATALOG NO: 6649-30T 30 µg (Trial size)
 6649-100 100 µg

ALTERNATE NAMES: PRL, Luterotropic hormone, LTH, Lutetropin, Mammothrophin.

HOST: Rabbit

ISOTYPE: IgG

IMMUNOGEN: Recombinant protein human Prolactin

INTERNAL ID: BV-N1

PURIFICATION: Affinity purified rabbit IgG

FORM: Liquid

FORMULATION: 100 µg (0.5 mg/ml) of antibody in PBS pH 7.2, 0.01 % BSA, 0.01 % thimerosal, and 50 % glycerol.

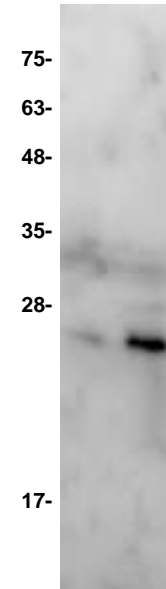
SPECIES REACTIVITY: Human

STORAGE CONDITIONS: Store for 1 year at -20°C from date of shipment. Avoid repeated freeze/thaw cycles.

DESCRIPTION:
 Prolactin (also known as mammothrophin, luterotropic hormone, and lutetropin) is a neuroendocrine hormone secreted by the pituitary gland. Its primary function is to promote and maintain lactation during pregnancy and suckling. In addition, Prolactin plays an immune-regulatory role by stimulating the activities of ornithine decarboxylase and protein kinase C, which are important for the proliferation, differentiation, and function of lymphocytes. Recombinant human Prolactin is a 23 kDa globular protein containing 200 amino acid residues.

APPLICATION:
 The antibody can be used for Western blot analysis (1:200 dilution). However, the optimal conditions should be determined individually. Other applications have not been determined.

Note: This information is only intended as a guide. The optimal dilutions must be determined by the user.



Western blot of Prolactin antibody.

Lane 1: human Prolactin (29-227aa) - 2 ng.
 Lane 2: human Prolactin (29-227aa) - 10 ng.

RELATED PRODUCTS:

- Recombinant human Prolactin (Cat. No. 4687-10, -50, -1000)
- Recombinant murine Prolactin (Cat. No. 4688-10, -50, -1000)
- Recombinant rat Prolactin (Cat. No. 4689-10, -50, -1000)
- Prolactin Receptor, human recombinant (Cat. No. 4989-20, -1000)
- Prolactin Receptor, rat recombinant (Cat. No. 4991-50, -1000)
- Prolactin Antibody (Cat. No. 5688-100)
- Prolactin Antibody (Cat. No. 5689-100)

FOR RESEARCH USE ONLY! Not to be used on humans.

