

SPHKAP Antibody

CATALOG NO: 6656 -30T 30 µg (Trial size)
6656-100 100 µg

ALTERNATE NAMES: A-kinase anchor protein SPHKAP, SPHK1 interactor, AKAP domain containing, DKFZp781H143, DKFZp781J171, KIAA1678, MGC132614 antibody, MGC132616, SKIP antibody, A-kinase anchor protein Sphingosine kinase type 1-interacting protein, SPHK1 (Sphingosine kinase type 1) interacting protein, SPHK1-interactor and AKAP domain-containing protein, SPHK1 interactor, AKAP domain.

HOST: Rabbit

IMMUNOGEN: Synthetic peptide at C-terminal (BV-L21)

PURIFICATION: Affinity purified rabbit IgG

FORM: Liquid

FORMULATION: 0.5 mg/ml of antibody in PBS pH 7.2, 0.01 % BSA, 0.01 % thimerosal, and 50 % glycerol.

SPECIES REACTIVITY: Human, mouse, rat

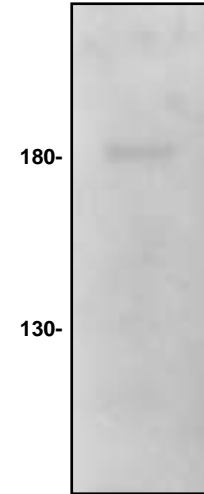
STORAGE CONDITIONS: Store at -20°C. Avoid repeated freeze/thaw cycles.

DESCRIPTION: Anchoring protein that binds preferentially to the type I regulatory subunit of c-AMP-dependent protein kinase (PKA type I) and targets it to distinct subcellular compartments. May act as a converging factor linking cAMP and sphingosine signaling pathways. Plays a regulatory role in the modulation of SPHK1.

APPLICATION: Western blot: 1-4 µg/ml.

SPECIFICITY: Detects a ~ 181 kDa band in Western Blot. Other applications have not been determined.

Note: This information is only intended as a guide. The optimal dilutions must be determined by the user.



Western blot of SPHKAP antibody with Jurkat cell lysate

RELATED PRODUCTS:

- SPHKAP Blocking Peptide (Cat. No. 6656BP-50)

FOR RESEARCH USE ONLY! Not to be used on humans.

