

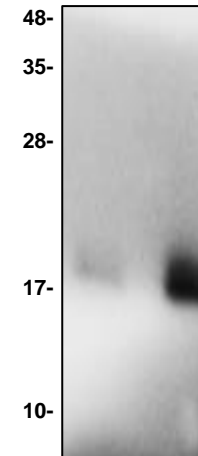
IL-1RA Antibody

| | |
|----------------------------|---|
| CATALOG NO: | 6666-30T 30 µg (Trial size) 6666-100 100 µg |
| ALTERNATE NAMES: | IRAP, IL1F3, IL1RA, IL-1ra3, ICIL-1RA, IL1RN, IL1 inhibitor, IL-1ra, MGC10430, human IL-1RA, recombinant human IL-1RA |
| CONCENTRATION: | 0.5 mg/ml |
| HOST: | Rabbit |
| IMMUNOGEN: | Recombinant protein of human IL-1RA (Cat # 4263) |
| INTERNAL ID: | BV-N55-56 |
| PURIFICATION: | Affinity purified rabbit IgG |
| FORM: | Liquid |
| FORMULATION: | 0.5 mg/ml affinity purified rabbit polyclonal antibody in PBS pH 7.2, containing 30% glycerol, 0.5% BSA, 0.5 mM EDTA, and 0.03% Proclin |
| SPECIES REACTIVITY: | Human |
| STORAGE CONDITIONS: | Store at -20 °C. Avoid repeated freeze/thaw cycles. |

DESCRIPTION: Interleukin-1 RA is a member of the interleukin 1 cytokine family. This protein inhibits the activities of interleukin 1-alpha (IL1A) and interleukin 1-beta (IL1B), and modulates a variety of interleukin 1 related immune and inflammatory responses. This gene and five other closely related cytokine genes form a gene cluster spanning approximately 400 kb on chromosome 2. A polymorphism of this gene is reported to be associated with increased risk of osteoporotic fractures and gastric cancer. Four alternatively spliced transcript variants encoding distinct isoforms have been reported. IL1RA Human Recombinant produced in E.Coli is a non-glycosylated, N-terminal methionyl form of the human naturally-occurring polypeptide chain containing 153 amino acids and having a molecular mass of 17000 Dalton.

APPLICATION: Western blot: 1-4 µg

Note: This information is only intended as a guide. The optimal dilutions must be determined by the user.



Western blot of IL-1RA antibody:

Lane 1: Recombinant human IL-1RA protein - 2 ng.
Lane 2: Recombinant human IL-1RA protein - 10 ng

RELATED PRODUCTS:

- IL-1RA, human recombinant (**Cat. No. 4263-20, 100, -1000**)
- IL-1RA, mouse recombinant (**Cat. No. 4264-10, 50, -1000**)

FOR RESEARCH USE ONLY! Not to be used on humans.