

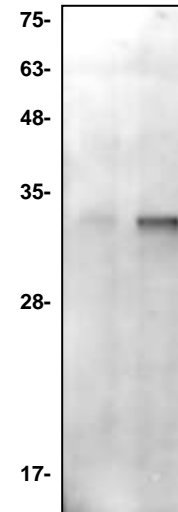
Cathepsin L Antibody

CATALOG NO:	6669-30T 30 µg (Trial size)
	6669-100 100 µg
ALTERNATE NAMES:	CTSL, CTSL1
CONCENTRATION:	0.5 mg/ml
HOST:	Rabbit
IMMUNOGEN:	Recombinant human Cathepsin L protein (Cat # 1135)
INTERNAL ID:	BV-N71-72
PURIFICATION:	Affinity purified rabbit IgG
FORM:	Liquid
FORMULATION:	100 µg (0.5 mg/ml) of antibody in PBS pH 7.2, 0.01 % BSA, 0.01 % thimerosal, and 50 % glycerol.
SPECIES REACTIVITY:	Human
STORAGE CONDITIONS:	Store at -20°C. Avoid repeated freeze/thaw cycles.

DESCRIPTION: Cathepsin L, a lysosomal endopeptidase expressed in most eukaryotic cells, is a member of the papain-like family of cysteine proteinases.1-3 Cathepsin L plays a major role in antigen processing, tumor invasion and metastasis, bone resorption, and turnover of intracellular and secreted proteins involved in growth regulation.4-6 Although commonly recognized as a lysosomal protease, cathepsin L is also secreted. This broad-spectrum protease is potent in degrading several extracellular proteins (laminins, fibronectin, collagens I and IV, elastin, and other structural proteins of basement membranes) as well as serum proteins and cytoplasmic and nuclear proteins.

APPLICATION: Western blot: 1-4 µg

Note: This information is only intended as a guide. The optimal dilutions must be determined by the user.



Western blot of rh-cathepsin L antibody:

Lane 1: Recombinant rh-cathepsin L - 2 ng.

Lane 2: Recombinant rh-cathepsin L - 10 ng

RELATED PRODUCTS:

- Cathepsin L, human recombinant (**Cat. No. 1135-5, -100, -1000**)
- Human CellExp™ Cathepsin B, human recombinant (**Cat. No. 7408-10**)
- Human CellExp™ Cathepsin D, human recombinant (**Cat. No. 7409-10**)
- Human CellExp™ Cathepsin S, human recombinant (**Cat. No. 7277-10, -50, -1000**)
- Human CellExp™ Cathepsin L1, human recombinant (**Cat. No. 7410-10**)
- Cathepsin K, Active, human recombinant (**Cat. No. 7600-5, -50**)
- Cathepsin K, Active, mouse recombinant (**Cat. No. 7597-5, -50**)
- Cathepsin K, Active, rat recombinant (**Cat. No. 7598-5, -50**)
- Cathepsin B (active, human) (**Cat. No. 1021-5**)
- Cathepsin D (active, human) (**Cat. No. 1022-5**)
- Cathepsin H (active, human) (**Cat. No. 1023-5**)
- Procathepsin K, human recombinant (**Cat. No. 1026-10, -50, -1000**)
- Procathepsin K, mouse recombinant (**Cat. No. 1027-10, -50, -1000**)
- Procathepsin K, rat recombinant (**Cat. No. 1029-10, -50, -1000**)

FOR RESEARCH USE ONLY! Not to be used on humans.