

Wnt-2 Antibody

CATALOG NO: 6671-30T 30 µg (Trial size)
6671-100 100 µg

ALTERNATE NAMES: INT1L1, IRP, Int-1-like protein 1, Int-1-related protein

CONCENTRATION: 0.5 mg/ml

HOST: Rabbit

IMMUNOGEN: Recombinant human Wnt-2 protein (Cat # 7599)

INTERNAL ID: BV-N57

PURIFICATION: Affinity purified rabbit IgG

FORM: Liquid

FORMULATION: 0.5 mg/ml of antibody in PBS pH7.2, 0.01 % BSA, 0.01 % thimerosal, and 50 % glycerol

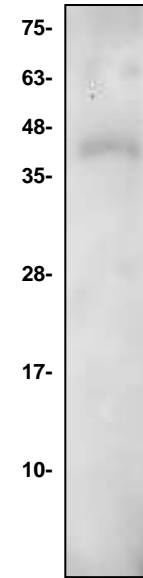
SPECIES REACTIVITY: Human

STORAGE CONDITIONS: Store at -20°C. Avoid repeated freeze/thaw cycles.

DESCRIPTION: This protein belongs to the Wnt family of proteins. The WNT gene family consists of structurally related genes that encode secreted signaling proteins involved in the Wnt signaling pathway. Wnt gene family members, including Wnt-1 through Wnt-10, play a key role in regulating cellular growth and differentiation. These proteins have been implicated in oncogenesis and in several developmental processes, including regulation of cell fate and patterning during embryogenesis. Wnt-2 is expressed in brain in the thalamus, in fetal and adult lung and in the placenta.

APPLICATION: Western blot: 1-4 µg

Note: This information is only intended as a guide. The optimal dilutions must be determined by the user.



Western blot of Wnt-2 antibody:
Lane 1: hr Wnt-2: 50 ng.

RELATED PRODUCTS:

- Wnt-2, human recombinant (Cat # 7599-10, -50, -1000)
- Wnt-1, human recombinant (Cat # 4754-10, -50, -1000)
- Wnt-1 Antibody (Cat # 3571-100)
- Wnt-1 Antibody (Cat # 5754-100)
- Wnt-2 Antibody (Cat # 3572R-100)
- Wnt-4 Antibody (Cat # 3574R-100)
- Wnt-6 Antibody (Cat # 3570-100)

FOR RESEARCH USE ONLY! Not to be used on humans.

