

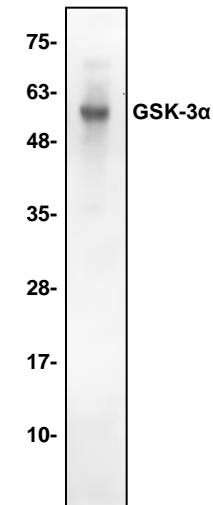
GSK-3 α Antibody

CATALOG NO:	6676-30T 30 μ g (Trial size) 6676-100 100 μ g
ALTERNATE NAMES:	Serine/threonine-protein kinase GSK3A, GSK-3alpha, Glycogen synthase kinase-3, GSK-3 alpha
CONCENTRATION:	0.5 mg/ml
HOST/ISOTYPE:	Rabbit IgG
IMMUNOGEN:	Human recombinant GSK-3 α (Cat # 7003)
INTERNAL ID:	BV-E35
PURIFICATION:	GSK-3 α antibody has been affinity purified from rabbit IgG
FORM:	Liquid
FORMULATION:	0.5 mg/ml of GSK-3 α antibody in PBS, pH 7.2, 30% glycerol, 0.5% BSA, 0.5 mM EDTA and 0.03% proclin
SPECIES REACTIVITY:	Human
STORAGE CONDITIONS:	Store at -20°C. Avoid repeated freeze/thaw cycles.

DESCRIPTION: Glycogen synthase kinase 3-alpha is a multifunctional protein serine kinase. GSK-3 phosphorylates and inactivates glycogen synthase. It has also been implicated in the regulation of cell fate in Dictyostelium and is a component of the Wnt signaling pathway required for Drosophila, Xenopus, and mammalian development. GSK-3 has been shown to regulate Cyclin D1 proteolysis and subcellular localization. GSK-3alpha (GSK-3 α) regulates the production of amyloid-beta peptides, a major component of the plaques that accumulate with progression of Alzheimer's disease, by phosphorylating Tau proteins. This presents the possibility that defects in GSK-3 signaling can contribute to the onset of Alzheimer's disease. GSK-3 α can be phosphorylated by Akt at Ser21. This phosphorylation of GSK-3 α negatively regulates its kinase activity.

APPLICATION: Western blot: 1-4 μ g

Note: This information is only intended as a guide. The optimal dilutions must be determined by the user.



**Western blot with GSK-3 α antibody:
Lane 1: Recombinant 3T3 cell lysate**

RELATED PRODUCTS:

- GSK-3a-GST Fusion Protein (Cat. No. 7003- 100)
- GSK-3a Antibody (Cat. No. 3493- 100)
- GSK-3b Antibody (Cat. No. 3494- 100)
- Phospho-GSK-3a Antibody (Cat. No. 3516- 100)
- Phospho-GSK-3b Antibody (Cat. No. 3495- 100)
- Tau Antibody (Cat. No. 3549R- 100)
- Tau-13 Antibody (Clone B11E8) (Cat. No. 3453- 100)
- Phospho-Tau Antibody (Cat. No. 3550- 100)
- Phospho-Tau Antibody (Cat. No. 3550R- 100)

FOR RESEARCH USE ONLY! Not to be used on humans.