

## Procathepsin B Antibody

**CATALOG NO:** 6679-30T 30 µg (Trial size)  
6679-100 100 µg

**ALTERNATE NAMES:** CTSB, CPSB

**CONCENTRATION:** 0.5 mg/ml

**HOST:** Rabbit

**IMMUNOGEN:** Human Recombinant Procathepsin B, Cat. No. 7579

**INTERNAL ID:** BV-N79

**PURIFICATION:** Affinity purified rabbit IgG

**FORM:** Liquid

**FORMULATION:** 0.5 mg/ml of antibody in PBS pH 7.2, 0.01 % BSA, 0.01 % thimerosal and 50 % glycerol

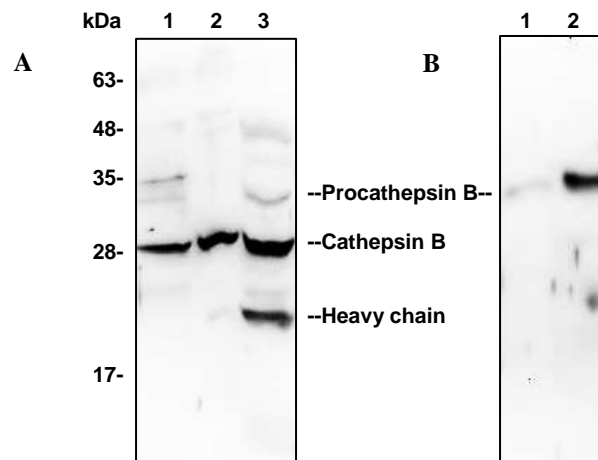
**SPECIES REACTIVITY:** Human, mouse and rat

**STORAGE CONDITIONS:** Store at -20°C. Avoid repeated freeze/thaw cycles.

**DESCRIPTION:** Cathepsin B is a normal lysosomal cysteine proteinase that is expressed in all cells. It is synthesized as an inactive 43 kDa pro-enzyme which, by removal of a 62 amino acid propeptide, is activated to the single-chain form of 31 kDa or the two-chain form (25 and 5 kDa subunits). Matured cathepsin B is normally localized in the lysosomes where it functions in protein turnover. Cathepsin B is also shown capable of degrading extracellular matrix proteins. Elevated levels of cathepsin B correlate with malignancy suggesting that this enzyme may be a useful prognostic marker for several types of human cancers.

**APPLICATION:** Western blot: 1-4 µg

**Note:** This information is only intended as a guide. The optimal dilutions must be determined by the user.



**Western blot with Procathepsin B antibody:**

Figure A:  
Lane 1: 50 µg Jurkat cell lysate.  
Lane 2: 50 µg 3T3 cell lysate.  
Lane 3: 50 µg Rat kidney lysate

Figure B:  
Lane 1: 2 ng Human Recombinant Procathepsin B, Cat # 7579  
Lane 2: 10 ng Human Recombinant Procathepsin B, Cat # 7579

**RELATED PRODUCTS:**

- Procathepsin B, human recombinant (Cat. No. 7579-10, -50, -1000)
- Procathepsin K, human recombinant (Cat. No. 1026-10, -50, -1000)
- Procathepsin K, mouse recombinant (Cat. No. 1027-10, -50, -1000)
- Procathepsin K, rat recombinant (Cat. No. 1029-10, -50, -1000)
- Procathepsin L, human recombinant (Cat. No. 7581-5, -100, -1000)
- Cathepsin K, Active, human recombinant (Cat. No. 7600-5, -50)
- Cathepsin K, Active, mouse recombinant (Cat. No. 7597-5, -50)
- Cathepsin K, Active, rat recombinant (Cat. No. 7598-5, -50)
- Cathepsin B (active, human) (Cat. No. 1021-5)
- Cathepsin D (active, human) (Cat. No. 1022-5)
- Cathepsin H (active, human) (Cat. No. 1023-5)

**FOR RESEARCH USE ONLY! Not to be used on humans.**

