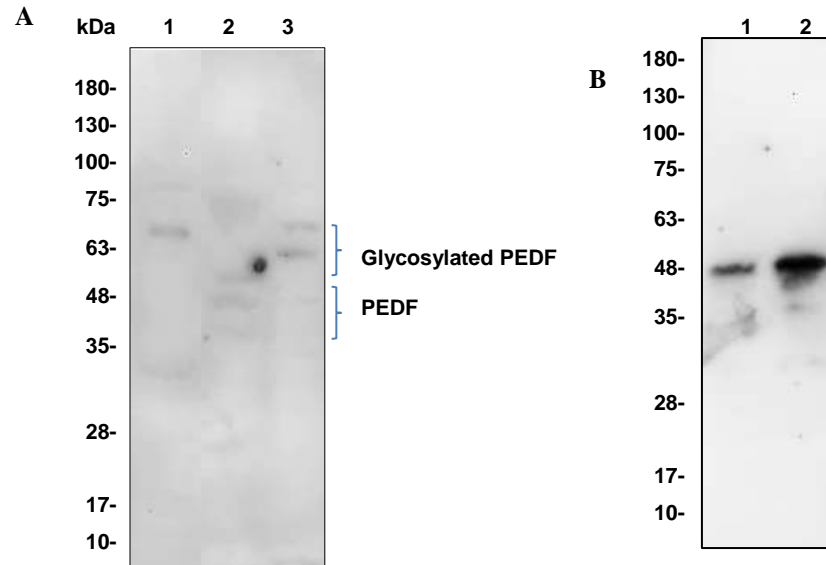


PEDF Antibody

CATALOG NO:	6680-30T 30 µg (Trial size)
	6680-100 100 µg
ALTERNATE NAMES:	Pigment epithelium-derived factor, PEDF, Serpin-F1, SerpinF1, EPC-1, EPC1, PIG35
CONCENTRATION:	0.5 mg/ml
HOST:	Rabbit
IMMUNOGEN:	Human recombinant PEDF, Cat. No. 4988
INTERNAL ID:	BV-N81
PURIFICATION:	Affinity purified rabbit IgG
FORM:	Liquid
FORMULATION:	0.5mg/ml in phosphate buffered saline (PBS), pH 7.2, containing 30% glycerol, 0.5% BSA, 5 mM EDTA and 0.03% proclin.
SPECIES REACTIVITY:	Human, mouse and rat
STORAGE CONDITIONS:	Store at -20°C. Avoid repeated freeze/thaw cycles.
DESCRIPTION:	<p>PEDF is a non-inhibitory serpin with neurotrophic, anti-angiogenic, and anti-tumorigenic properties. PEDF is a 50 kDa glycoprotein created and secreted in many tissues all the way through the body. A key component of the anti-angiogenic action of PEDF is the induction of apoptosis in proliferating endothelial cells. Additionally, PEDF is capable to inhibit the activity of angiogenic factors such as VEGF and FGF-2. The recognition of a lipase-linked cell membrane receptor for PEDF (PEDF-R) that binds to PEDF with high affinity should facilitate further elucidation of the underlying mechanisms of this pluripotent serpin. The unique range of PEDF activities associate it as a potential therapeutic agent for the treatment of vasculature related neurodegenerative diseases such as age-related macular degeneration (AMD) and proliferative diabetic retinopathy (PDR).</p>
APPLICATION:	Western blot: 1-4 µg

Note: This information is only intended as a guide. The optimal dilutions must be determined by the user.



Western blot with PEDF antibody.

Figure A:

Lane 1: 50 µg Jurkat cell lysate.

Lane 2: 50 µg 3T3 cell lysate.

Lane 3: 50 µg Mouse muscle lysate.

Lane 4: 50 µg Rat kidney lysate

Figure B:

Lane 1: 2 ng Human recombinant PEDF, Cat # 4988

Lane 2: 10 ng Human recombinant PEDF, Cat # 4988

RELATED PRODUCTS:

- Human recombinant PEDF (Cat. No. 4988-20, -100, 1000)
- Human CellExp™ SERPIN F1, human recombinant, (Cat. No. 7418-10, -50)
- Human CellExp™ SERPINA1 /A1AT, human recombinant, (Cat. No. 7235-10)
- Human CellExp™ SERPINA8, human recombinant, (Cat. No. 7236-10)
- Serpin E1/PAI-1, human recombinant, (Cat. No. 4731-10, -100, -1000)
- Serpin A6 Antibody (Cat. No. 3906-100)
- Serpin A6 Blocking Peptide (Cat. No. 3906BP-100)
- Neuroserpin, human recombinant, (Cat. No. 7181-10, -50)

FOR RESEARCH USE ONLY! Not to be used on humans.