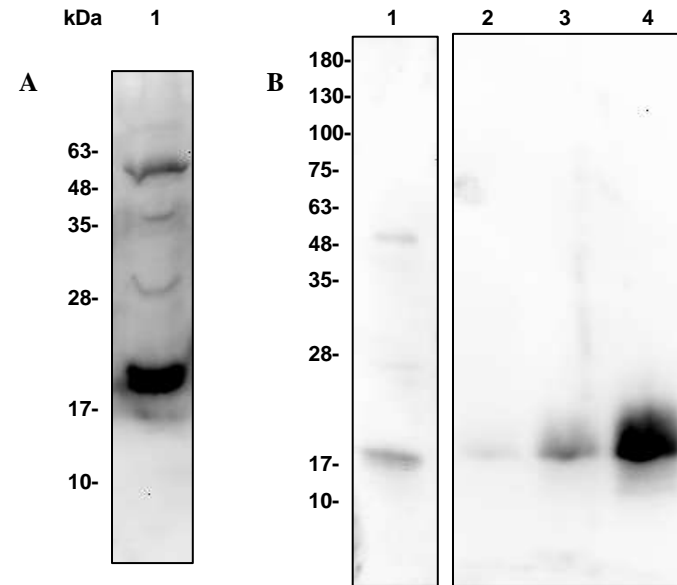


# FGF-4 Antibody

<b>CATALOG NO:</b>	6682-30T      30 µg (Trial size) 6682-100      100 µg
<b>ALTERNATE NAMES:</b>	HBGF4, FGF-4, FGF4, KFGF, HSTF1
<b>CONCENTRATION:</b>	0.5 mg/ml
<b>HOST:</b>	Rabbit
<b>IMMUNOGEN:</b>	Human recombinant FGF-4, Cat. No 4043
<b>INTERNAL ID:</b>	BV-N76
<b>PURIFICATION:</b>	Affinity purified rabbit IgG
<b>FORM:</b>	Liquid
<b>FORMULATION:</b>	0.5 mg/ml of antibody in PBS pH 7.2, 0.01 % BSA, 0.01 % thimerosal and 50 % glycerol
<b>SPECIES REACTIVITY:</b>	Human, rat
<b>STORAGE CONDITIONS:</b>	Store at -20°C. Avoid repeated freeze/thaw cycles.
<b>DESCRIPTION:</b>	Fibroblast Growth Factor 4 (FGF-4) is a growth factor predominantly expressed during embryonic development, playing a key role in limb development. In culture, FGF-4 has been shown to be an important growth factor for fibroblasts and endothelial cells. Human FGF-4 shares high homology and cross-reactivity with the mouse protein.
<b>APPLICATION:</b>	Western blot: 1-4 µg

**Note:** This information is only intended as a guide. The optimal dilutions must be determined by the user.



## Western blot with FGF-4 antibody

Figure A:  
Lane 1: 50 µg Rat kidney lysate

Figure B:  
Lane 1: 50 µg Jurkat cell lysate.  
Lane 2: 2 ng Human recombinant FGF-4, Cat # 4043  
Lane 3: 10 ng Human recombinant FGF-4, Cat # 4043  
Lane 4: 50 ng Human recombinant FGF-4, Cat # 4043

## RELATED PRODUCTS:

- FGF- basic, murine recombinant (Cat # 7145-10, -50)
- Human CellExp™ Human Recombinant FGF-4 (Cat # 6449-10, -50)
- Human CellExp™ Human Recombinant FGF-7 (Cat # 6450-10, -50)
- Human CellExp™ Human Recombinant FGF-8b (Cat # 6451-10, -50)
- FGF- basic 147, human recombinant (Cat # 4036-10, -50, -1000)
- FGF-1, human recombinant (Cat # 4034-10, -50, -1000)
- FGF-1, murine recombinant (Cat # 4035-10, -50, -1000)
- FGF-10/KGF-2, human recombinant (Cat # 4060-25, -100, -1000)
- FGF-18, human recombinant (Cat # 4082-25, -100, -1000)
- FGF-19, human recombinant (Cat # 4542-25, -100, -1000)

**FOR RESEARCH USE ONLY! Not to be used on humans.**