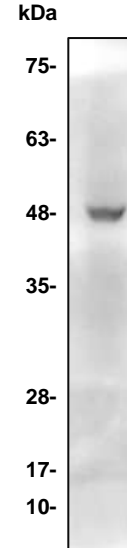


Thrombin Antibody

CATALOG NO:	6685-30T 30 µg (Trial size) 6685-100 100 µg
ALTERNATE NAMES:	Activated Factor IIa
CONCENTRATION:	0.5 mg/ml
HOST:	Rabbit
IMMUNOGEN:	Active Thrombin from Human Plasma (Cat. No. 7593)
INTERNAL ID:	BV-N95
PURIFICATION:	Affinity purified rabbit IgG
FORM:	Liquid
FORMULATION:	0.5 mg/ml of antibody in PBS pH 7.2, 0.01 % BSA, 0.03 % ProClin® and 50 % glycerol.
SPECIES REACTIVITY:	Human, Rat
STORAGE CONDITIONS:	Store at -20°C. Avoid repeated freeze/thaw cycles.
DESCRIPTION:	Thrombin enzyme (Activated Factor IIa) is an important clotting promoter that controls the transformation of soluble fibrinogen to insoluble active fibrin strands. Thrombin is a coagulation protein and a serine protease (EC 3.4.21.5) that catalyzes many coagulation-related reactions. Thrombin triggers factor-XI, factor-V, Factor-XIII and factor-VIII. Thrombin endorses platelet activation, using activation of protease-activated receptors on the platelet. Thrombin maintains vascular integrity during development and postnatal life and coordinates connective tissue proteins by stimulating fibroblast procollagen production.
APPLICATION:	Western blot: 1-4 µg

Note: This information is only intended as a guide. The optimal dilutions must be determined by the user.



Western blot with Thrombin antibody:

60 µg Rat kidney lysate

RELATED PRODUCTS:

- Thrombin, Active, Bovine Plasma, Technical Grade (**7591-1, 10, 100**)
- Thrombin, Active, Bovine Plasma, High Activity (**7592-1, 10, 100**)
- Thrombin, Active, Human Plasma (**7593-250, 1000**)
- Thrombin Sepharose Beads (**7925-1, -5, -25**)
- Antithrombin III (**7298-100, 500**)
- Thrombin Cleavage Kit (**K377-500**)
- Thrombin Activity Fluorometric Assay Kit (**K373-100**)
- Thrombin Inhibitor Screening Kit (Fluorometric) (**K374-100**)
- Activated Protein C, Human Plasma (**7683-50**)
- Prothrombin, Human Plasma (**7684-2**)
- Factor VII, Human Plasma (**7686-50**)
- Factor VIIa, Human Plasma (**7687-50**)

FOR RESEARCH USE ONLY! Not to be used on humans.