

Cathepsin S Antibody

ALTERNATE NAMES:	CTSS
CATALOG #:	6686-100
AMOUNT:	100 µg
HOST:	Rabbit
IMMUNOGEN:	Human Recombinant Cathepsin S, Cat # 7525
INTERNAL ID:	BV-N89
PURIFICATION:	Affinity purified rabbit IgG
FORM:	Liquid
FORMULATION:	100 µg (0.5 mg/ml) of antibody in PBS pH7.2, 0.01 % BSA, 0.03 % ProClin®, and 50 % glycerol,

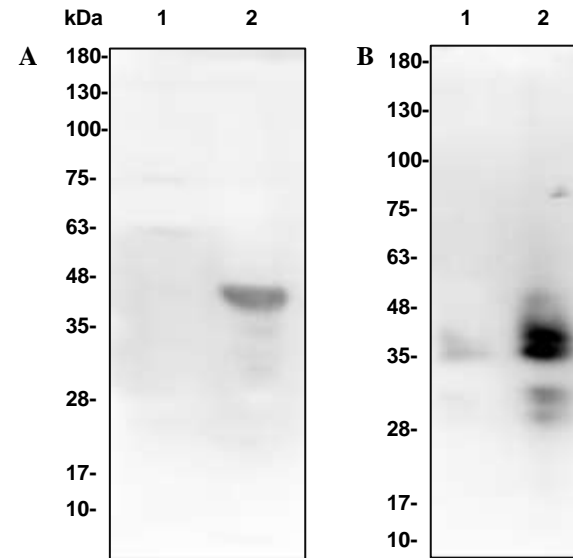
SPECIES REACTIVITY: Human, Mouse

STORAGE CONDITIONS: Store at -20°C. Avoid repeated freeze/thaw cycles.

DESCRIPTION: Cathepsin S (CTSS) is a lysosomal cysteine protease of the papain family and may participate in the degradation of antigenic proteins to peptides for presentation on MHC class II molecules. CTSS is synthesized as inactive precursor of 331 amino acids consisting of a 15-aa signal peptide, a propeptide of 99 aa, and a mature polypeptide of 217 aa. It is activated in the lysosomes by a proteolytic cleavage of the propeptide. The deduced amino acid sequence contains only one potential N-glycosylation site located in the propeptide. Compared with the abundant cathepsins B, L and H, cathepsin S shows a restricted tissue distribution, with highest levels in spleen, heart, and lung. In addition, evidences indicate that cathepsin S generates amyloid beta-peptide from amyloidogenic fragments of amyloid precursor protein (APP) in the endosomal/lysosomal compartment, and is implicated in the pathogenesis of Alzheimer's disease and Down Syndrome.

APPLICATION: Western blot: 1-4 µg

Note: This information is only intended as a guide. The optimal dilutions must be determined by the user.



Western blot with Cathepsin S antibody:

Figure A:

Lane 1: 60 µg Jurkat cell lysate.

Lane 2: 33 µg Mouse muscle lysate.

Figure B:

Lane 1: 2 ng Human Recombinant Cathepsin S, Cat # 7525

Lane 2: 10 ng Human Recombinant Cathepsin S, Cat # 7525

RELATED PRODUCTS:

- Procathepsin S, human recombinant (**Cat. No. 7525-10, -50, -500**)
- Active Cathepsin S Human Recombinant (**Cat. No. 7526-10, -50, -500**)
- Procathepsin B, human recombinant (**Cat. No. 7579-10, -50, -1000**)
- Procathepsin K, human recombinant (**Cat. No. 1026-10, -50, -1000**)
- Procathepsin K, mouse recombinant (**Cat. No. 1027-10, -50, -1000**)
- Procathepsin K, rat recombinant (**Cat. No. 1029-10, -50, -1000**)
- Procathepsin L, human recombinant (**Cat. No. 7581-5, -100, -1000**)
- Cathepsin K, Active, human recombinant (**Cat. No. 7600-5, -50**)
- Cathepsin K, Active, mouse recombinant (**Cat. No. 7597-5, -50**)
- Cathepsin K, Active, rat recombinant (**Cat. No. 7598-5, -50**)
- Cathepsin B (active, human) (**Cat. No. 1021-5**)
- Cathepsin D (active, human) (**Cat. No. 1022-5**)
- Cathepsin H (active, human) (**Cat. No. 1023-5**)

FOR RESEARCH USE ONLY! Not to be used on humans.