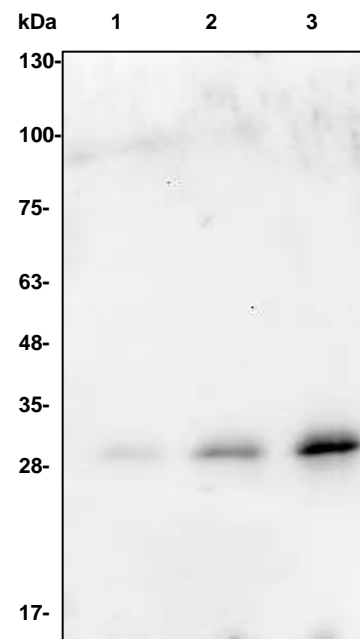


## TEV Protease Antibody

<b>ALTERNATE NAMES:</b>	Nuclear inclusion protein A, Nla protein	
<b>CATALOG NO:</b>	6689-30T	30 µg (Trial size)
	6689-100	100 µg
<b>HOST:</b>	Rabbit	
<b>IMMUNOGEN:</b>	Recombinant EZCut™ TEV Protease (Cat. No. 7847)	
<b>INTERNAL ID:</b>	BV-P13	
<b>PURIFICATION:</b>	Affinity purified rabbit IgG	
<b>FORM:</b>	Liquid	
<b>FORMULATION:</b>	0.5 mg/ml of antibody in PBS pH 7.2, 0.01% BSA, 0.03% ProClin® and 50% glycerol.	
<b>SPECIES REACTIVITY:</b>	All	
<b>STORAGE CONDITIONS:</b>	Store at -20°C. Avoid repeated freeze/thaw cycles.	
<b>DESCRIPTION:</b>	TEV Protease is a restriction grade protease that has robust activity at 4°C with high specificity and great stability. The optimal temperature for cleavage with this enzyme is 34°C. The protease is used for the removal of affinity tags from fusion proteins. The structure of TEV protease is similar to that of the serine protease family. Like serine proteases, TEV protease utilizes a catalytic triad of residues to hydrolyze peptide bonds. The distinguishing feature of TEV protease, however, is that instead of the serine nucleophile in the triad Ser-Asp-His, there is a cysteine, which may explain the resistance of TEV protease to protease inhibitors which are commonly used.	
<b>APPLICATION:</b>	Western blot: 1-4 µg	

**Note:** This information is only intended as a guide. The optimal dilutions must be determined by the user.



### Western blot with TEV Protease antibody:

Lane 1: 2 ng Recombinant EZCut™ TEV Protease (Cat # 7847)  
 Lane 2: 10 ng Recombinant EZCut™ TEV Protease (Cat # 7847)  
 Lane 3: 50 ng Recombinant EZCut™ TEV Protease (Cat # 7847)

### RELATED PRODUCTS:

- EZCut™ TEV Protease, Recombinant (**Cat. No. 7847-1000, -10000**)
- TurboTEV Protease, Recombinant (**Cat. No. 9205-1**)
- TurboNuclease, Recombinant (**Cat. No. 9207-50KU**)
- Turbo3C (HRV3C) Protease, Recombinant (**Cat. No. 9206-1**)

**FOR RESEARCH USE ONLY! Not to be used on humans.**