

# CRP Antibody

**ALTERNATE NAMES:** C-Reactive Protein

**CATALOG NO:** 6690-30T 30 µg (Trial size)  
6690-100 100 µg

**HOST:** Rabbit

**IMMUNOGEN:** Recombinant human CRP (Cat No. 4863)

**INTERNAL ID:** BV-P9

**PURIFICATION:** Affinity purified rabbit IgG

**FORM:** Liquid

**FORMULATION:** 0.5 mg/ml of antibody in PBS pH 7.2, 0.01 % BSA, 0.03 % ProClin® and 50 % glycerol.

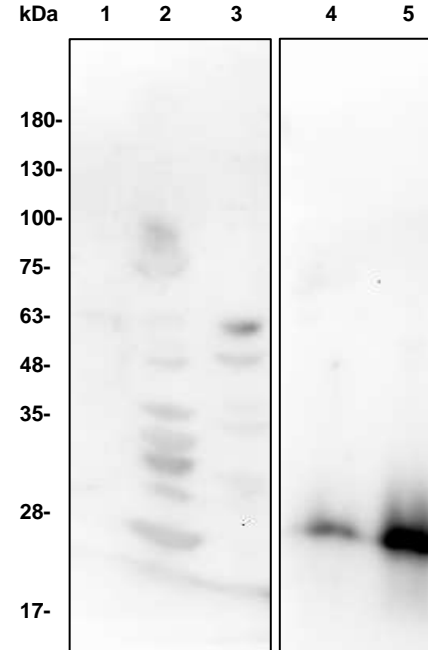
**SPECIES REACTIVITY:** Human, Mouse Rat

**STORAGE CONDITIONS:** Store at -20°C. Avoid repeated freeze/thaw cycles.

**DESCRIPTION:** C-Reactive protein (CRP) is an acute-phase protein that can have both pro-and anti-inflammatory effects. CRP is synthesized by the liver in response to factors released by fat cells or adipocytes. CRP is a member of the pentaxin family of proteins and in its native form is composed of five identical subunits, non-covalently linked to form a symmetrical disc of ~ 115 KDa. Widely used as a clinical marker of the state of inflammation. Increased CRP levels are found in inflammatory conditions including: bacterial infection, rheumatic fever, active arthritis, myocardial infarction, malignancies and in the post-operative state.

**APPLICATION:** Western blot: 1-4 µg

**Note:** This information is only intended as a guide. The optimal dilutions must be determined by the user.



**Western blot with CRP antibody:**  
 Lane 1: 60 µg Jurkat cell lysate  
 Lane 2: 44 µg mouse muscle lysate  
 Lane 3: 60 µg rat kidney lysate  
 Lane 4: 2 ng Recombinant human CRP (Cat # 4864)  
 Lane 5: 10 ng Recombinant human CRP (Cat # 4864)

**RELATED PRODUCTS:**

- CRP, human recombinant (Cat. No. 4863-10, -50, -1000)

**FOR RESEARCH USE ONLY! Not to be used on humans.**

