

TDP1 Antibody (Clone AT1F2)

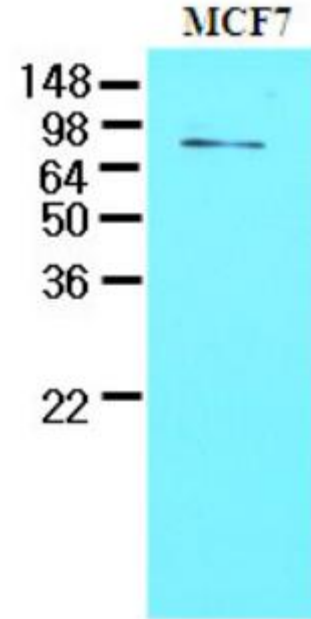
ALTERNATE NAMES:	Tyrosyl-DNA phosphodiesterase 1, TDP1 protein, TDP1.
CATALOG #:	6698-50
AMOUNT:	50 µl
HOST/ISOTYPE:	Mouse IgG2b and IgGκ
IMMUNOGEN:	Recombinant human TDP1 (1-298aa) purified from E. Coli. Anti-human TDP1 mAb, clone AT1F2, is derived from hybridization of mouse F0 myeloma cells with spleen cells from BALB/c mice immunized with a recombinant human TDP1 protein.
PURIFICATION:	By protein-G affinity chromatography.
MOLECULAR WEIGHT:	~70.00 kDa
FORM:	Liquid
FORMULATION:	Supplied in PBS with 0.1% sodium azide.
SPECIES REACTIVITY:	Human.
STORAGE CONDITIONS:	Maintain refrigerated at 2-8°C for up to 6 months. For long term storage, store at -20°C in small aliquots to prevent freeze-thaw cycles.

DESCRIPTION: Tyrosyl-DNA phosphodiesterase (TDP1) is a DNA repair enzyme that catalyzes the hydrolysis of a phosphodiester bond between a tyrosine residue and a DNA 3' phosphate. This protein is a member of the phospholipase D (PLD) superfamily and contains two PLD phosphodiesterase domains. Mutations in TDP1 are associated with the disease spino-cerebellar ataxia with axonal neuropathy (SCAN1) by interfering with DNA transcription or by inducing apoptosis in postmitotic neurons.

APPLICATION: Western blot: ~1:1000 - 2000, ELISA.

Note: This information is only intended as a guide. The optimal dilutions must be determined by the user.

FOR RESEARCH USE ONLY! Not to be used on humans.



Cell lysates of MCF7 (30ug) were resolved by SDS-PAGE, transferred to NC membrane and probed with anti-human TDP1 (1:1000). Proteins were visualized using a goat anti-mouse secondary antibody conjugated to HRP and an ECL detection system.

RELATED PRODUCTS:

- TDP2 Antibody (Cat # 6697-50)