

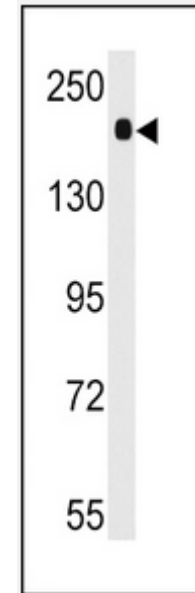
ACE Antibody (CT)

ALTERNATE NAMES:	ACE; DCP; DCP1; Angiotensin-converting enzyme; Dipeptidyl carboxypeptidase I; Kininase II; CD_antigen - CD143; Angiotensin-converting enzyme, soluble form
CATALOG #:	6703-100
AMOUNT:	100 µl
HOST/ISOTYPE:	Rabbit IgG
IMMUNOGEN:	This ACE antibody is generated from rabbits immunized with a KLH conjugated synthetic peptide between 1274-1306 amino acids from the C-terminal region of human ACE.
PURIFICATION:	This antibody is prepared by Saturated Ammonium Sulfate (SAS) precipitation followed by dialysis against PBS.
MOLECULAR WEIGHT:	~149.71 kDa
FORM:	Liquid
FORMULATION:	Supplied in PBS with 0.09% (W/V) sodium azide.
SPECIES REACTIVITY:	Human, Mouse
STORAGE CONDITIONS:	Maintain refrigerated at 2-8°C for up to 6 months. For long term storage, store at -20°C in small aliquots to prevent freeze-thaw cycles.

DESCRIPTION: Angiotensin-converting enzyme (ACE) is a carboxy-terminal dipeptidyl exopeptidase that converts Angiotensin I to the potent vasopressive hormone, Angiotensin II. There are two isoforms of ACE, the pulmonary ACEP and the testicular ACET. ACEP is a glycoprotein expressed in vascular endothelial cells of the lung, liver, adrenal cortex, pancreas, kidney and spleen. The ACET isoform is expressed exclusively in adult testis by developing sperm cells, specifically, late pachytene spermatocytes. Additionally, ACE inactivates bradykinin, a vasodepressor peptide, and is involved in fluid/electrolyte homeostasis. Although it bears significant sequence homology to ACE, ACE2 shows a more restricted pattern of expression. ACE is expressed ubiquitously throughout the vasculature while ACE2 is expressed only in cardiac, renal and testicular cells.

APPLICATION: Western blot: 1:1000

Note: This information is only intended as a guide. The optimal dilutions must be determined by the user.



Western blot analysis of anti-ACE Antibody (C-term) (Cat # 6703-100) in mouse lung tissue lysates (35 µg/lane). ACE (arrow) was detected using the purified pAb.

RELATED PRODUCTS:

- Angiotensin II, human (**Cat. No. 4917-5MG**)
- ACE2 (human) ELISA Kit (**Cat. No. K4918-100**)
- Human CellExp™ Renin, Human Recombinant (**Cat. No. 6300-10, -50, -100**)
- Human CellExp™ SERPIN A8, human recombinant (**Cat. No. 7236-10**)

FOR RESEARCH USE ONLY! Not to be used on humans.