

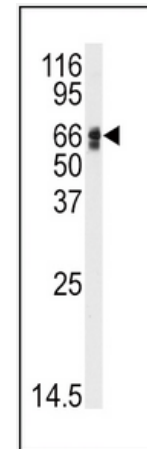
AGT Antibody (NT)

ALTERNATE NAMES:	AGT; SERPINA8; Angiotensinogen; Serpin A8; Angiotensin-1; Angiotensin I; Angiotensin-2; Angiotensin II; Angiotensin-3; Angiotensin III;
CATALOG #:	6709-100
AMOUNT:	100 µl
HOST/ISOTYPE:	Rabbit IgG
IMMUNOGEN:	This AGT antibody is generated from rabbits immunized with a KLH conjugated synthetic peptide between 37-65 amino acids from the N-terminal region of human AGT.
PURIFICATION:	This antibody is prepared by Saturated Ammonium Sulfate (SAS) precipitation followed by dialysis against PBS.
MOLECULAR WEIGHT:	~53.15 kDa
FORM:	Liquid
FORMULATION:	Supplied in PBS with 0.09% (W/V) sodium azide.
SPECIES REACTIVITY:	Human
STORAGE CONDITIONS:	Maintain refrigerated at 2-8°C for up to 6 months. For long term storage, store at -20°C in small aliquots to prevent freeze-thaw cycles.

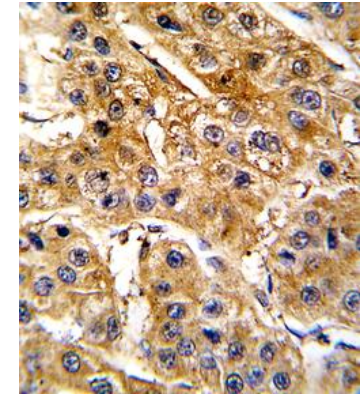
DESCRIPTION: Angiotensinogen, also known as AGT and SERPINA8, is a member of the serpin family. It is an α -2-globulin that is produced constitutively and released into the circulation mainly by the liver. Angiotensinogen is an essential component of the renin-angiotensin system (RAS) and a potent regulator of blood pressure. It is expressed by the liver and secreted in plasma. Angiotensinogen is cleaved into three chains: Angiotensin-1 (Ang I), Angiotensin-2 (Ang II), and Angiotensin-3 (Ang III). Angiotensin-1 is a substrate of ACE (angiotensin converting enzyme) that removes a dipeptide to yield the physiologically active peptide angiotensin-2. Angiotensin-1 and angiotensin-2 can be further processed to generate angiotensin-3, angiotensin-4. Angiotensin 1-7 is cleaved from angiotensin-2 by ACE2. Angiotensin-2 acts directly on vascular smooth muscle as a potent vasoconstrictor, affects cardiac contractility and heart rate through its action on the sympathetic nervous system. Defects in AGT are associated with susceptibility to essential hypertension and renal tubular dysgenesis (RTD).

APPLICATION: Western blot: ~1:1000, IHC: ~1:10-1:50

Note: This information is only intended as a guide. The optimal dilutions must be determined by the user.



Western blot analysis of anti-AGT Antibody (N-term) (Cat # 6709-100) in HepG2 cell line lysates (35 µg/lane). AGT (arrow) was detected using the purified pAb.



Formalin-fixed and paraffin-embedded human hepatocarcinoma tissue reacted with AGT antibody (N-term), which was peroxidase-conjugated to the secondary antibody, followed by DAB staining. This data demonstrates the use of this antibody for immunohistochemistry; clinical relevance has not been evaluated.

RELATED PRODUCTS:

- AGT Antibody (CT) (**Cat. No. 6708-100**)
- Angiotensin II, human (**Cat. No. 4917-5MG**)
- ACE Antibody (CT) (**Cat. No. 6703-100**)
- ACE2 (human) ELISA Kit (**Cat. No. K4918-100**)
- Human CellExp™ Renin, Human Recombinant (**Cat. No. 6300-10, -50, -100**)
- Human CellExp™ SERPIN A8, human recombinant (**Cat. No. 7236-10**)

FOR RESEARCH USE ONLY! Not to be used on humans.