

## His-Tag Antibody (Clone 11E12)

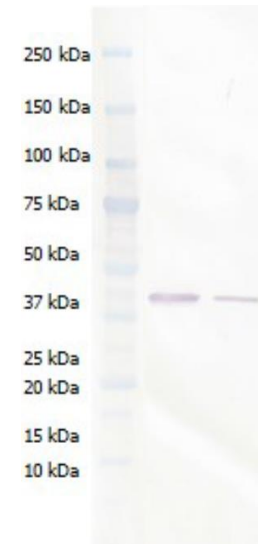
<b>CATALOG #:</b>	6714-100
<b>AMOUNT:</b>	100 µg
<b>HOST:</b>	Mouse
<b>ISOTYPE:</b>	IgG1 κ
<b>IMMUNOGEN:</b>	6X-HIS-KLH
<b>PURIFICATION:</b>	Protein A chromatography from <i>in vitro</i> production
<b>PURITY:</b>	> 95% determined by Size Exclusion Chromatography
<b>FORMULATION:</b>	1 mg/ml in 0.15 M PBS
<b>pI:</b>	6.0 – 7.5
<b>SPECIFICITY:</b>	Recognizes polyhistidine (His) tags of 4X or greater engineered at either the N- or C- terminus of a protein. Does not bind to E. coli host cell proteins.
<b>STORAGE CONDITIONS:</b>	Store at -20°C, avoid repeat freeze-thaw cycles.

**DESCRIPTION:** A variety of plasmids contain DNA that encodes an N-terminal tag consisting of six histidine (His) residues, followed by an extended multiple cloning sites. The 6xHis tag on the expressed recombinant proteins allows for efficient coupling to Ni<sup>++</sup> affinity resins and purification by a single step chromatography. As is the case with other protein tags, this polyhistidine tag can be cleaved at sites recognized by enzymes such as thrombin and enterokinases to isolate the protein of interest.

**APPLICATION:** ELISA, WB.

**KEY FEATURES:**

- **Excellent Sensitivity:** Detects ng quantities of HIS-tagged proteins.
- **Reliability:** Minimal lot to lot variability.
- **Strong Affinity:** 8.85 x 10<sup>-12</sup> M by Forte Bio Octet Red



Western blot with His-Tag Antibody (Clone 11E12).  
Lane 1: Marker  
Lane 2: 100 ng His-tagged protein  
Lane 3: 20 ng His-tagged protein

**RELATED PRODUCTS:**

- His-Tag Antibody (Clone BV-G020) (Cat. No. 3646-100)
- His-Tag Antibody (Cat. No. 3998-100)
- His-Tag Blocking Peptide (Cat. No. 3998BP-100)

**FOR RESEARCH USE ONLY! Not to be used on humans.**