

# ApoC2 Antibody (Center)

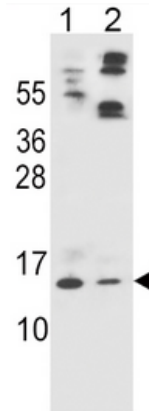
- ALTERNATE NAMES:** APOC2; APC2; Apolipoprotein C-II; Apolipoprotein C2
- CATALOG #:** 6718-100
- AMOUNT:** 100 µl
- HOST/ISOTYPE:** Rabbit IgG
- IMMUNOGEN:** This APOC2 antibody is generated from rabbits immunized with a KLH conjugated synthetic peptide between 45-73 amino acids from the Central region of human APOC2.
- PURIFICATION:** This antibody is purified through a protein A column, followed by peptide affinity purification.
- MOLECULAR WEIGHT:** ~11.2 kDa
- FORM:** Liquid
- FORMULATION:** Supplied in PBS with 0.09% (W/V) sodium azide.
- SPECIES REACTIVITY:** Human. Predicted cross reactivity with Monkey samples.
- STORAGE CONDITIONS:** Maintain refrigerated at 2-8°C for up to 6 months. For long term storage, store at -20°C in small aliquots to prevent freeze-thaw cycles.

**DESCRIPTION:** Apolipoproteins are plasma lipoproteins that function as transporters of lipids and cholesterol in the circulatory system. This gene encodes a lipid-binding protein belonging to the apolipoprotein gene family. The protein is secreted in plasma where it is a component of very low density lipoprotein. This protein activates the enzyme lipoprotein lipase, which hydrolyzes triglycerides and thus provides free fatty acids for cells. Mutations in this gene cause hyperlipoproteinemia type IB, characterized by hypertriglyceridemia, xanthomas, and increased risk of pancreatitis and early atherosclerosis. This gene is present in a cluster with other related apolipoprotein genes on chromosome 19. Naturally occurring read-through transcription exists between this gene and the neighboring upstream apolipoprotein C-IV (APOC4) gene.

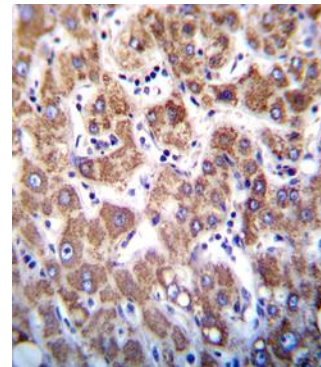
**APPLICATION:** Western blot: ~1:1000, IHC: ~1:10-1:50.

**Note:** This information is only intended as a guide. The optimal dilutions must be determined by the user.

**FOR RESEARCH USE ONLY! Not to be used on humans.**



Western blot analysis of APOC2 Antibody (N-term) (Cat # 6718-100) in HL60 and A549 cell line lysates (35 µg/lane). APOC2 (arrow) was detected using the purified Pab.



Formalin-fixed and paraffin-embedded human liver tissue reacted with APOC2 antibody (Cat # 6718-100), which was peroxidase-conjugated to the secondary antibody, followed by DAB staining. This data demonstrates the use of this antibody for immunohistochemistry; clinical relevance has not been evaluated.

**RELATED PRODUCTS:**

- ApoA1 Antibody (Cat # 5693-100)
- ApoA1 Antibody (Cat # 5695-100)
- ApoA1 Antibody (NT) (Cat # 6712-100)
- ApoA4 Antibody (NT) (Cat # 6713-100)
- ApoB Antibody (Cat # 3661-100)
- ApoA5 Antibody (NT) (Cat # 6717-100)
- ApoD Antibody (NT) (Cat # 6719-100)
- ApoE Antibody (CT) (Cat # 6720-100)
- ApoE2 Antibody (Cat # 5760-100)
- ApoE3 Antibody (Cat # 5696-100)
- ApoE4 Antibody (Cat # 5699-100)
- ApoER2 Antibody (CT) (Cat # 6721-100)
- ApoF Antibody (Center) (Cat # 6722-100)

