

# ApoE Antibody (CT)

**ALTERNATE NAMES:** APOE; Apolipoprotein E

**CATALOG #:** 6720-100

**AMOUNT:** 100 µl

**HOST/ISOTYPE:** Rabbit IgG

**IMMUNOGEN:** This APOE antibody is generated from rabbits immunized with a KLH conjugated synthetic peptide between 263-292 amino acids from the C-terminal region of human APOE.

**PURIFICATION:** This antibody is prepared by Saturated Ammonium Sulfate (SAS) precipitation followed by dialysis against PBS.

**MOLECULAR WEIGHT:** ~36.1 kDa

**FORM:** Liquid

**FORMULATION:** Supplied in PBS with 0.09% (W/V) sodium azide.

**SPECIES REACTIVITY:** Human. Predicted cross reactivity with Monkey and Rabbit samples.

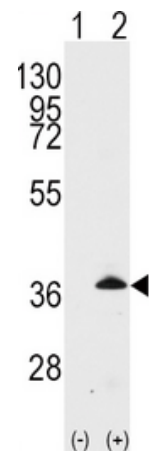
**STORAGE CONDITIONS:** Maintain refrigerated at 2-8°C for up to 6 months. For long term storage, store at -20°C in small aliquots to prevent freeze-thaw cycles.

**DESCRIPTION:** ApoE belongs to a group of proteins that bind reversibly with lipoprotein and play an important role in lipid metabolism. In addition to facilitating solubilization of lipids, these proteins help to maintain the structural integrity of lipoproteins, serve as ligands for lipoprotein receptors, and regulate the activity of enzymes involved in lipid metabolism. Significant quantities of ApoE are produced in liver and brain and to some extent in almost every organ. ApoE is an important constituent of all plasma lipoproteins. Defects in ApoE are a cause of hyperlipoproteinemia type III. ApoE exists in three major isoforms; E2, E3, and E4, which differ from one another by a single amino-acid substitution.

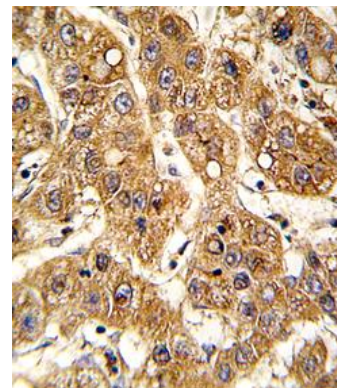
**APPLICATION:** Western blot: ~1:1000, IHC: ~1:10-1:50.

**Note:** This information is only intended as a guide. The optimal dilutions must be determined by the user.

**FOR RESEARCH USE ONLY! Not to be used on humans.**



Western blot analysis of APOE (arrow) using rabbit polyclonal APOE Antibody (C-term) (Cat.# 6720-100). 293 cell lysates (2 µg/lane) either nontransfected (Lane 1) or transiently transfected with the APOE gene (Lane 2)



Formalin-fixed and paraffin-embedded human hepatocarcinoma tissue reacted with APOE antibody (Cat # 6720-100), which was peroxidase-conjugated to the secondary antibody, followed by DAB staining. This data demonstrates the use of this antibody for immunohistochemistry; clinical relevance has not been evaluated.

**RELATED PRODUCTS:**

- ApoA1 Antibody (Cat # 5693-100)
- ApoA1 Antibody (Cat # 5695-100)
- ApoA1 Antibody (NT) (Cat # 6712-100)
- ApoA4 Antibody (NT) (Cat # 6713-100)
- ApoB Antibody (Cat # 3661-100)
- ApoA5 Antibody (NT) (Cat # 6717-100)
- ApoC2 Antibody (Center) (Cat # 6718-100)
- ApoD Antibody (NT) (Cat # 6719-100)
- ApoE2 Antibody (Cat # 5760-100)
- ApoE3 Antibody (Cat # 5696-100)
- ApoE4 Antibody (Cat # 5699-100)
- ApoER2 Antibody (CT) (Cat # 6721-100)
- ApoF Antibody (Center) (Cat # 6722-100)

